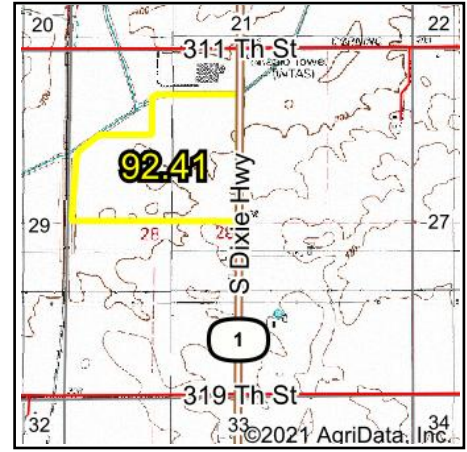
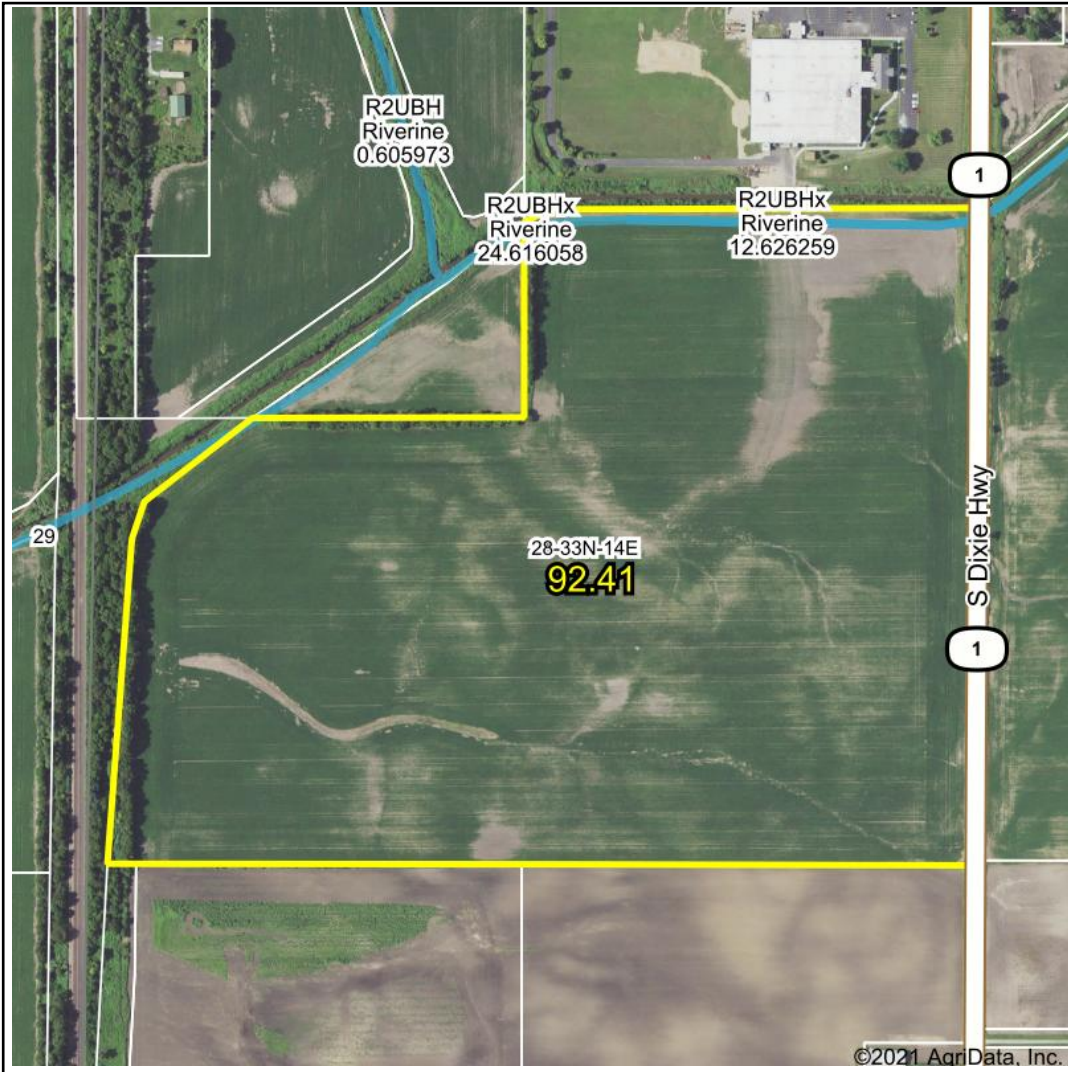
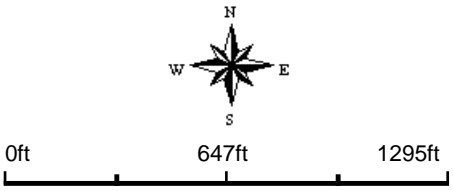


# Wetlands Map



State: **Illinois**  
 Location: **28-33N-14E**  
 County: **Will**  
 Township: **Washington**  
 Date: **2/12/2021**

  
 Maps Provided By:  
  
© AgriData, Inc. 2021      www.AgriDataInc.com



Classification Code	Type	Acres
R2UBHx	Riverine	0.84
Total Acres		0.84

Data Source: National Wetlands Inventory website. U.S. DoI, Fish and Wildlife Service, Washington, D.C. <http://www.fws.gov/wetlands/>