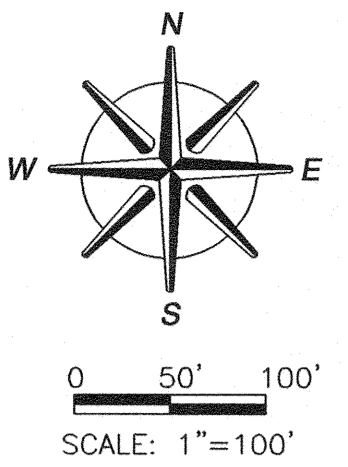
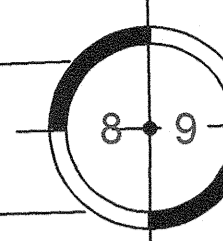


TRACT 1



PLAT OF SURVEY

PARCEL A
Part of the Southwest Quarter (SW1/4) of Section Eight (8), Township Sixteen (16) North, Range Nine (9) East of the Fourth (4th) Principal Meridian, City of Princeton, Bureau County, Illinois, described as follows, to wit:

Commencing at the northwest corner of said Southwest Quarter (SW1/4) of said Section Eight (8); thence North 88 degrees 16 minutes 44 seconds East, along the north line of said Southwest Quarter (SW1/4), a distance of 1,040.70 feet to the Point of Beginning of the herein described Parcel; thence North 88 degrees 16 minutes 44 seconds East, continuing along said north line, a distance of 726.30 feet; thence South 0 degrees 42 minutes 01 seconds East, a distance of 168.55 feet; thence North 88 degrees 16 minutes 44 seconds East, a distance of 304.85 feet to the west line of Haven Addition; thence South 0 degrees 42 minutes 01 seconds East, along said west line, a distance of 711.43 feet to the northeast corner of an existing 2.735 acre tract; thence South 34 degrees 42 minutes 10 seconds West, along a north line of said 2.735 acre tract, a distance of 284.71 feet; thence South 89 degrees 18 minutes 36 seconds West, along a north line of said 2.735 acre tract, a distance of 305.00 feet to the northwest corner of said 2.735 acre tract; thence South 0 degrees 42 minutes 27 seconds East, along the west line of said 2.735 acre tract, a distance of 216.71 feet to a point in the centerline of West Clark Street; thence South 88 degrees 20 minutes 02 seconds West, along said centerline, a distance of 207.80 feet; thence South 88 degrees 17 minutes 44 seconds West, continuing along said centerline, a distance of 726.61 feet; thence North 35 degrees 41 minutes 39 seconds West, a distance of 547.13 feet; thence North 88 degrees 11 minutes 55 seconds East, a distance of 105.39 feet; thence North 0 degrees 49 minutes 02 seconds West, a distance of 374.58 feet; thence North 64 degrees 49 minutes 39 seconds East, a distance of 622.82 feet; thence North 0 degrees 47 minutes 21 seconds West, a distance of 234.90 feet to the Point of Beginning, containing 39.356 acres, more or less.

PARCEL B
Part of the Southwest Quarter (SW1/4) of Section Eight (8), Township Sixteen (16) North, Range Nine (9) East of the Fourth (4th) Principal Meridian, City of Princeton, Bureau County, Illinois, described as follows, to wit:

Commencing at the northwest corner of said Southwest Quarter (SW1/4) of said Section Eight (8); thence North 88 degrees 16 minutes 44 seconds East, along the north line of said Southwest Quarter (SW1/4), a distance of 1,040.70 feet; thence North 88 degrees 16 minutes 44 seconds East, continuing along said north line, a distance of 726.30 feet to the Point of Beginning of the herein described Parcel; thence North 88 degrees 16 minutes 44 seconds East, continuing along said north line, a distance of 304.85 feet to the west line of Haven Addition to the City of Princeton; thence South 0 degrees 42 minutes 01 seconds East, along said west line, a distance of 168.55 feet; thence North 88 degrees 16 minutes 44 seconds East, a distance of 304.85 feet; thence North 0 degrees 42 minutes 01 seconds West, a distance of 168.55 feet to the Point of Beginning, containing 1.179 acres, more or less.

PARCEL C
Part of the South Half (S1/2) of the Southwest Quarter (SW1/4) of Section Eight (8), Township Sixteen (16) North, Range Nine (9) East of the Fourth (4th) Principal Meridian, City of Princeton, Bureau County, Illinois, described as follows, to wit:

Commencing at northwest corner of the said South Half (S1/2) of the Southwest Quarter (SW1/4) of said Section Eight (8); thence North 88 degrees 17 minutes 44 seconds East, along the North line thereof, a distance of 1391.88 feet to the northeast corner of an existing 2.768 acre tract of land described in Book 977 at page 254 in the Office of the Bureau County Recorder, said point being the Point of Beginning of the herein described parcel; thence North 88 degrees 20 minutes 02 seconds East, along said north line, a distance of 527.04 feet; thence South 26 degrees 19 minutes 08 seconds West, along the west line of Linwood Meadows Phase II, a distance of 368.81 feet; thence South 15 degrees 32 minutes 24 seconds West, continuing along said west line, a distance of 219.34 feet to the Southwest corner of Lot Fourteen (14) in said Linwood Meadows Phase II, said point being on the North line of an existing 21.73 acre tract of land described in Book 1183 at page 608 in the Office of the Bureau County Recorder; thence South 82 degrees 29 minutes 01 seconds West, along said north line, a distance of 300.43 feet; thence South 34 degrees 27 minutes 20 seconds West, continuing along said North line, a distance of 19.58 feet to the Southeast corner of the aforementioned 2.768 acre tract of land; thence North 0 degrees 26 minutes 22 seconds East, along the east line thereof, a distance of 274.41 feet; thence North 0 degrees 25 minutes 33 seconds East, continuing along said east line, a distance of 307.63 feet to the Point of Beginning, containing 5.075 acres, more or less.

SURVEYORS STATEMENT

This plat and the survey it represents was made under my direct supervision in accordance with the minimum standards of practice pertaining to boundary surveys in the State of Illinois; all monuments and markers exist as shown hereon; all dimensional and geodetic details are to the best of my knowledge correct as shown hereon. Dimensions are in feet and decimals of a foot unless otherwise specified. Bearings or angles are in degrees, minutes and seconds, unless otherwise specified. Bearings or angles, distances and areas shown hereon are based upon grid coordinates using the Illinois State Plane Coordinate System (West Zone-2011 adjustment). No warranty is made or implied as to the existence or location of any public or private easements that may affect the platted property unless shown hereon, and also no warranty is made or implied as to compliance with 785ILCS-205/1b of the Illinois Compiled Statutes. This Professional Service conforms with the Current Illinois Minimum Standards of Practice for Boundary Surveys.

Dated this 20 day of SEPTEMBER, A.D., 2021 Dixon, Illinois.

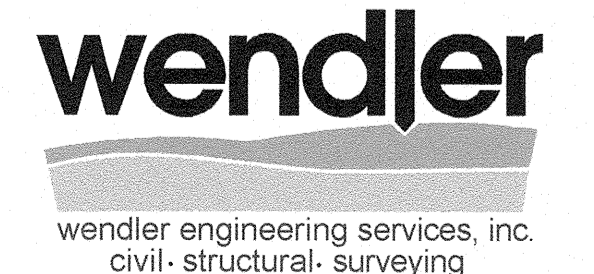
Patrick T. Hubert
Patrick T. Hubert
ILLINOIS PROFESSIONAL LAND SURVEYOR
NO. 35-4026

My license expires November 30, 2022.



LEGEND

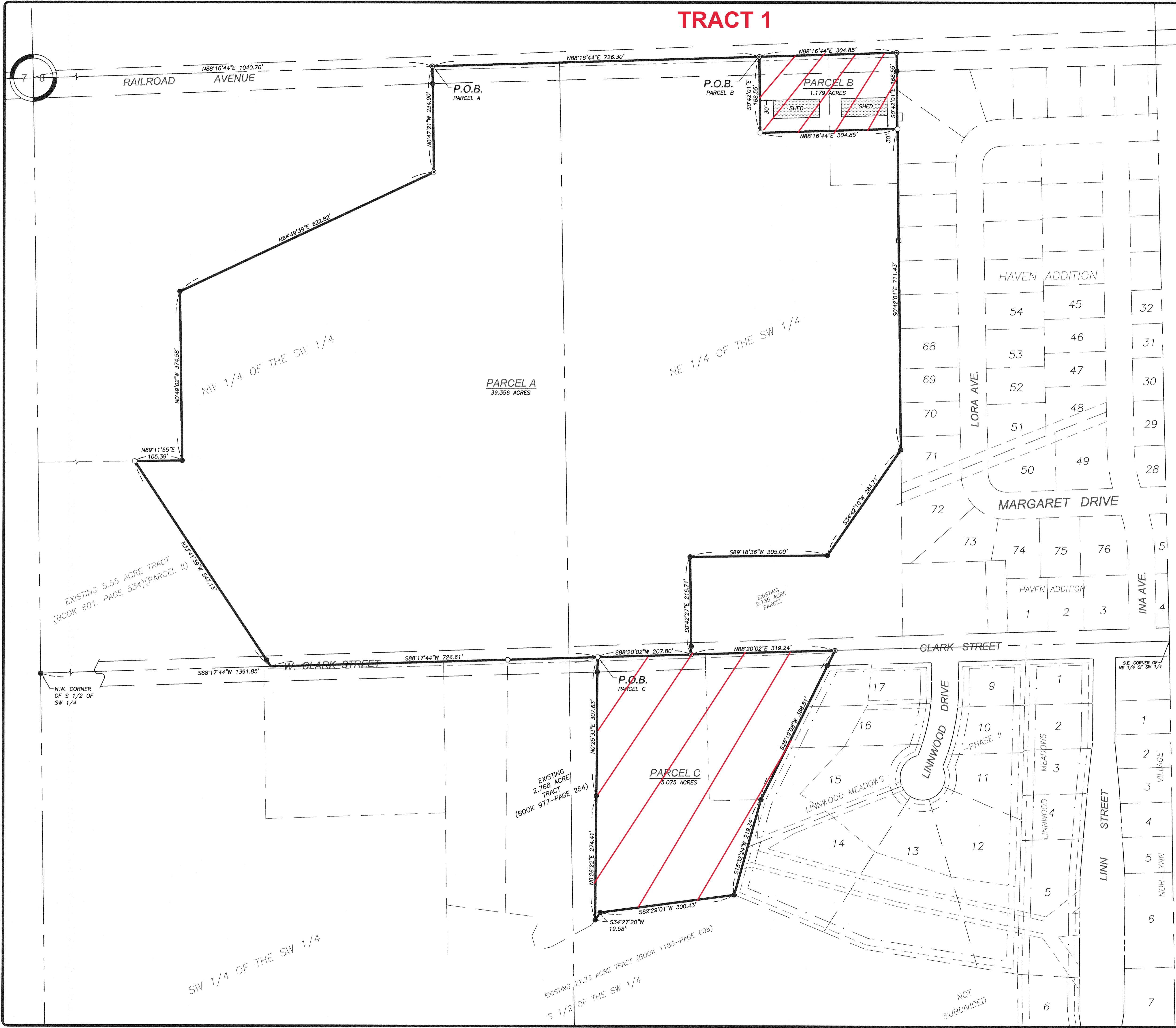
- BOUNDARY OF SURVEY
- ▲ MONUMENT FOUND
- ▲ STONE FOUND
- SET SURVEY NAIL
- 5/8" STEEL PIN SET
- CHISELED "X"
- R.O.W. MARKER
- P.K. MARKER
- P.K.
- SECTION LINE
- RIGHT OF WAY LINE
- FENCE LINE
- BUILDING SETBACK (BSL)
- UTILITY EASEMENT (UE)
- (101.26°) RECORD DIMENSION
- (90°01'29") RECORD ANGLE
- (N89°12'22"E) RECORD BEARING



www.wendlergs.com ph: 815.288.2261
Illinois Professional Design Firm No. 184-000848

PLAT OF SURVEY FOR TIMOTHY HERRICK

DATE:	09/20/2021
JOB NO.:	2210074
SURVEYED BY:	MRK/BPK
BOOK NO.:	FILE
DRAWN BY:	DJV
DRAWING NAME:	2210074
REVISIONS:	



NW 1/4 OF THE SW 1/4

SW 1/4 OF THE SW 1/4

NE 1/4 OF THE SW 1/4

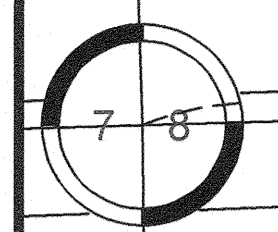
S 1/2 OF THE SW 1/4

N.W. CORNER OF S 1/2 OF SW 1/4

EXISTING 5.55 ACRE TRACT (BOOK 601, PAGE 534)(PARCEL II)

NW 1/4 OF THE SW 1/4

RAILROAD AVENUE



NOT SUBDIVIDED