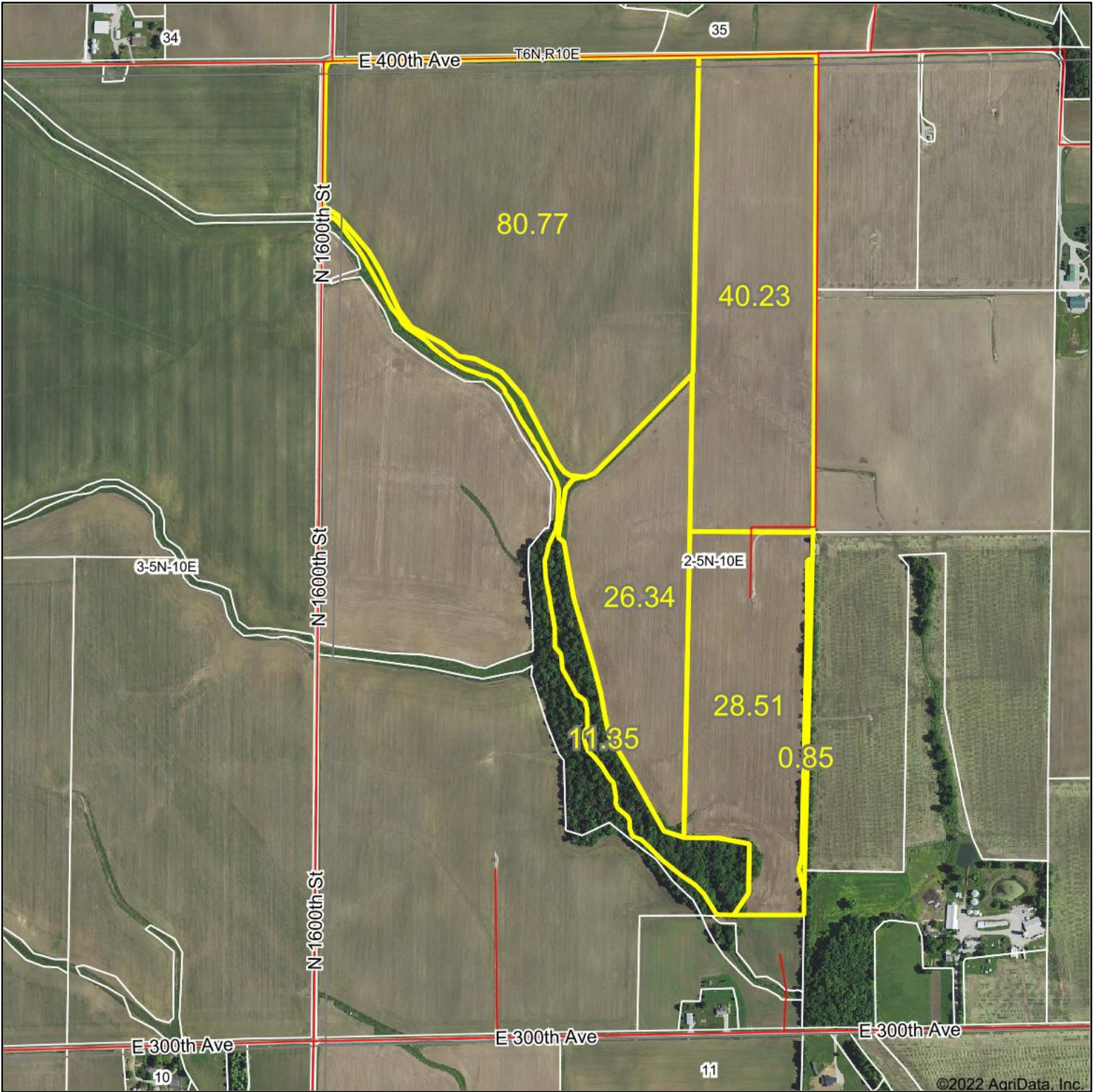


Aerial Map



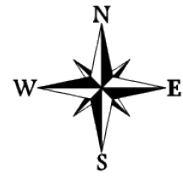
©2022 AgriData, Inc.

Map Center: 38° 54' 2.53, -88° 4' 16.96

0ft 858ft 1715ft



2-5N-10E
Jasper County
Illinois



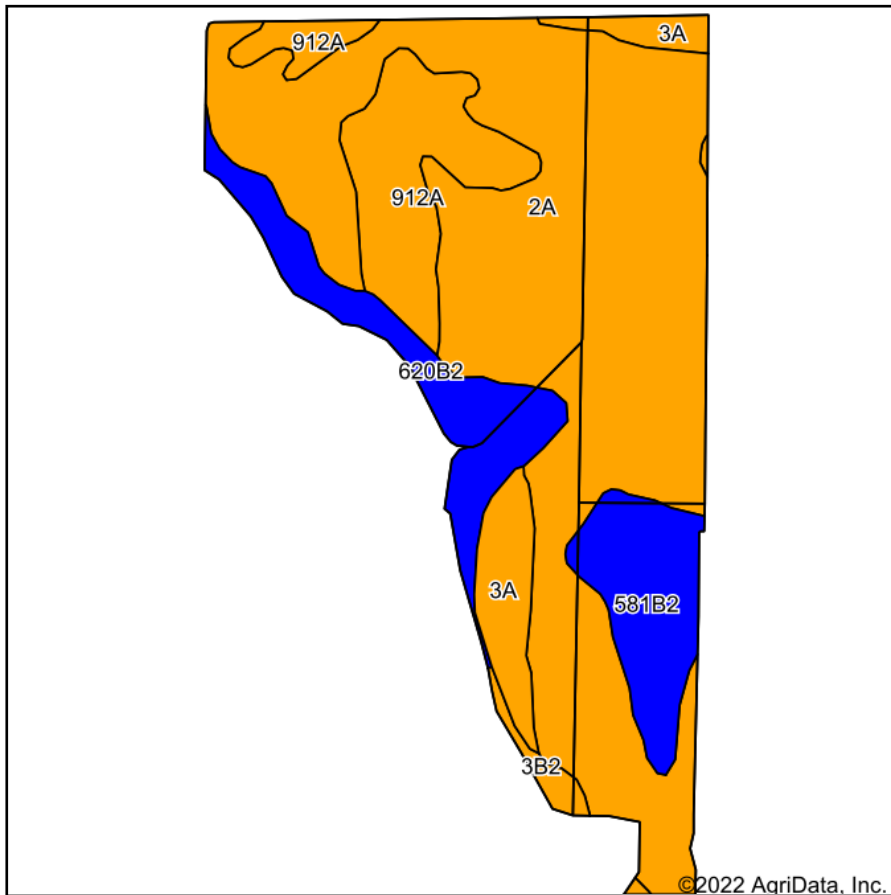
9/29/2022



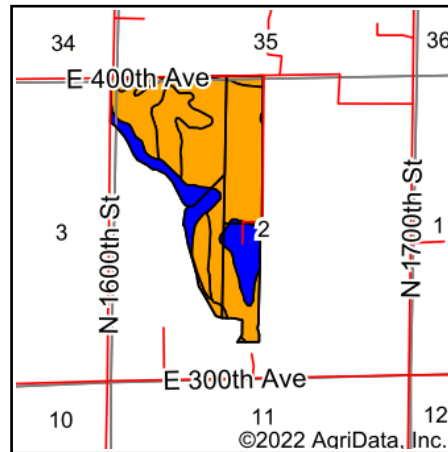
© AgriData, Inc. 2021 www.AgriDataInc.com

Field borders provided by Farm Service Agency as of 5/21/2008.

Soils Map



Soils data provided by USDA and NRCS.



State: **Illinois**
 County: **Jasper**
 Location: **2-5N-10E**
 Township: **Fox**
 Acres: **175.85**
 Date: **9/28/2022**



Area Symbol: IL079, Soil Area Version: 18

Code	Soil Description	Acres	Percent of field	Il. State Productivity Index Legend	Corn Bu/A	Soybeans Bu/A	Crop productivity index for optimum management
2A	Cisne silt loam, 0 to 2 percent slopes	111.08	63.2%		149	46	109
912A	Hoyleton-Darmstadt silt loams, 0 to 2 percent slopes	21.22	12.1%		134	45	103
**620B2	Darmstadt silt loam, 2 to 5 percent slopes, eroded	16.44	9.3%		**110	**40	**86
**581B2	Tamalco silt loam, 2 to 5 percent slopes, eroded	14.64	8.3%		**108	**40	**86
3A	Hoyleton silt loam, 0 to 2 percent slopes	10.40	5.9%		146	46	108
**3B2	Hoyleton silt loam, 2 to 5 percent slopes, eroded	2.07	1.2%		**139	**44	**103
Weighted Average					139.8	44.8	104.1

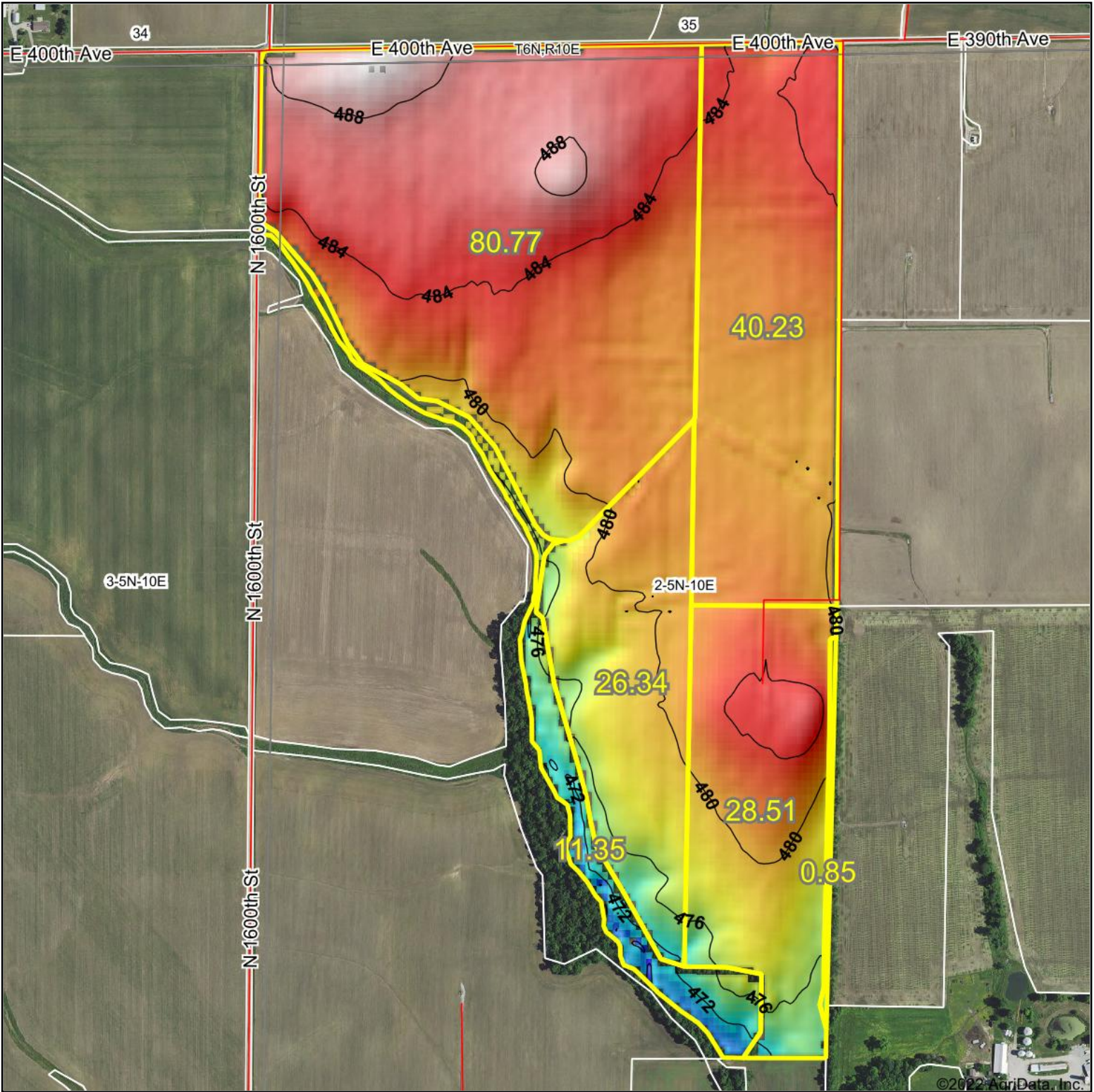
Table: Optimum Crop Productivity Ratings for Illinois Soil by K.R. Olson and J.M. Lang, Office of Research, ACES, University of Illinois at Champaign-Urbana. Version: 1/2/2012 Amended Table S2 B811

Crop yields and productivity indices for optimum management (B811) are maintained at the following NRES web site: <http://soilproductivity.nres.illinois.edu/>

** Indexes adjusted for slope and erosion according to Bulletin 811 Table S3

Soils data provided by USDA and NRCS. Soils data provided by University of Illinois at Champaign-Urbana.

Topography Hillshade



<p>Low Elevation High</p>	<p>Source: USGS 10 meter dem Interval(ft): 4 Min: 465.7 Max: 490.5 Range: 24.8 Average: 481.9 Standard Deviation: 3.74 ft</p>	<p>0ft 727ft 1453ft</p>
<p> CAPITAL AGRICULTURAL PROPERTY SERVICES Maps Provided By: surety CUSTOMIZED ONLINE MAPPING © AgriData, Inc. 2021 www.AgriDataInc.com</p>	<p>2-5N-10E Jasper County Illinois</p>	<p> 9/29/2022 map center: 38° 54' 2.53, -88° 4' 16.96</p>

Field borders provided by Farm Service Agency as of 5/21/2008.