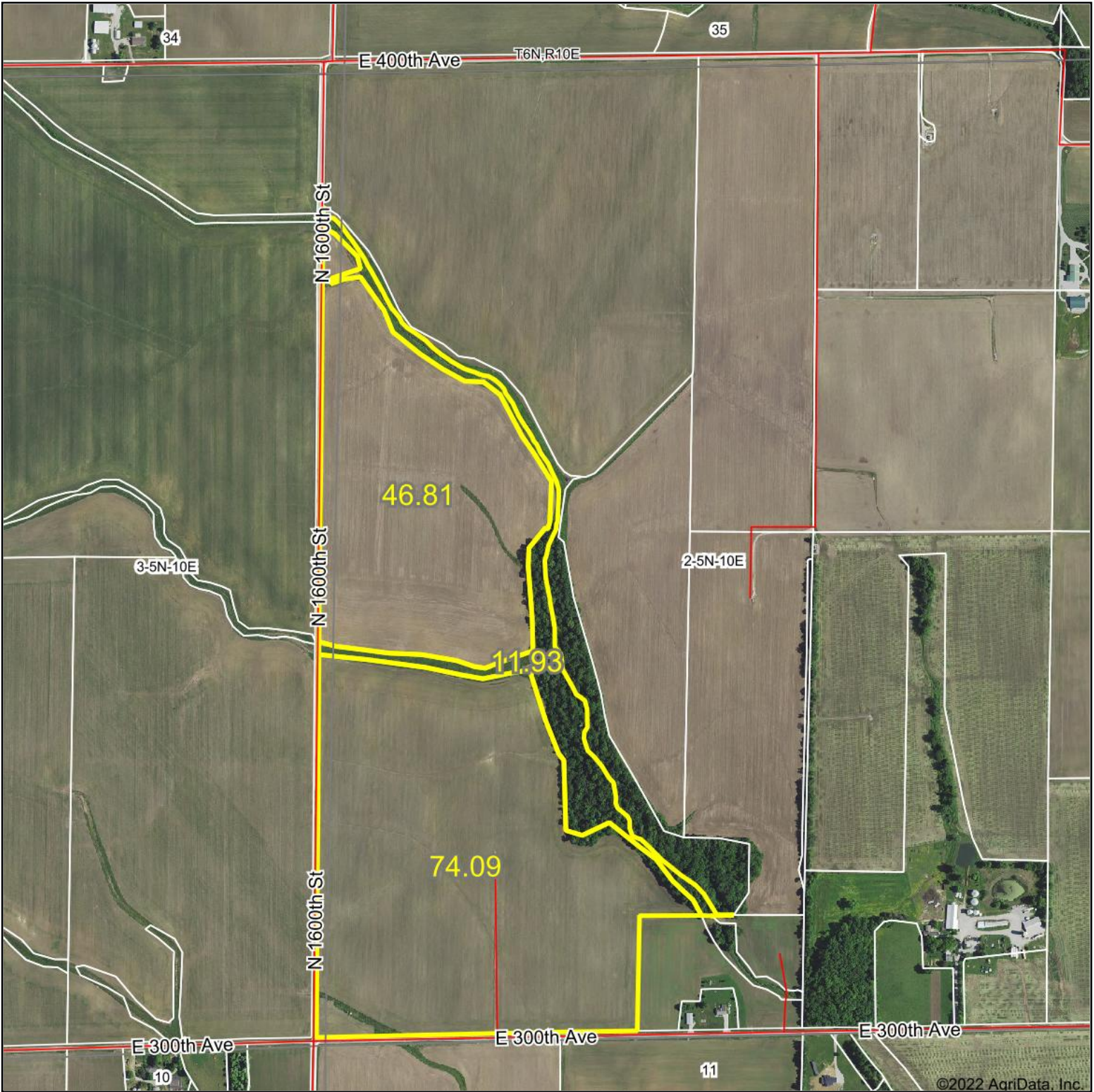
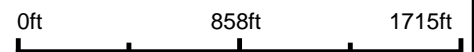


# Aerial Map



Map Center: 38° 54' 2.53, -88° 4' 16.96



**2-5N-10E**  
**Jasper County**  
**Illinois**

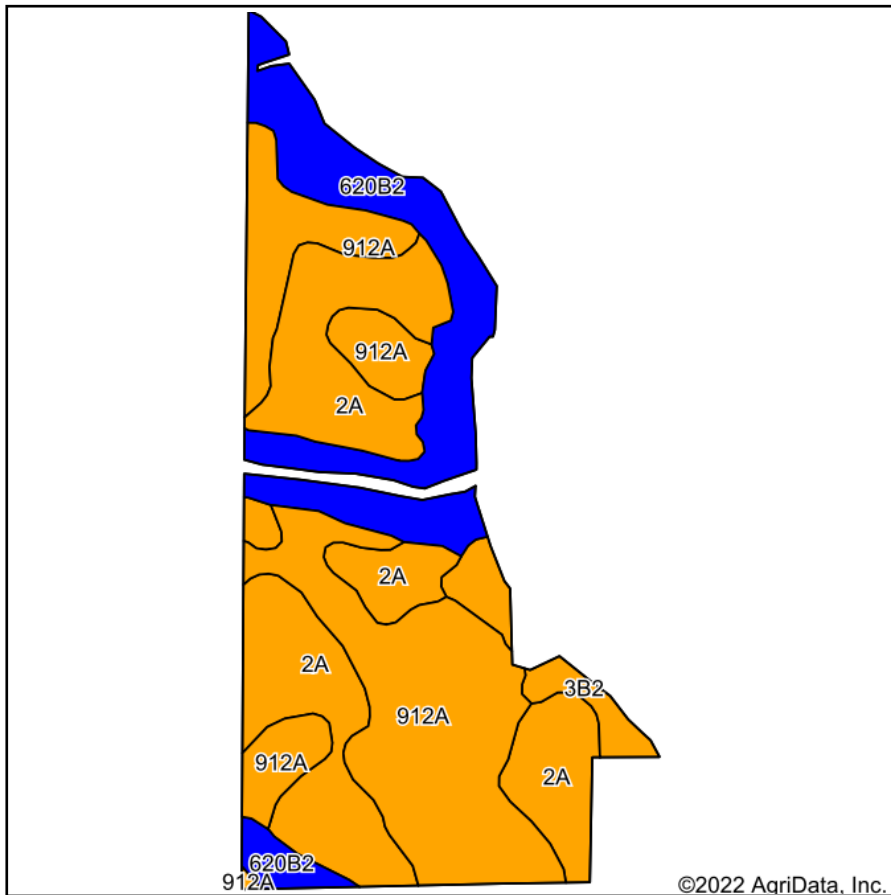


9/29/2022

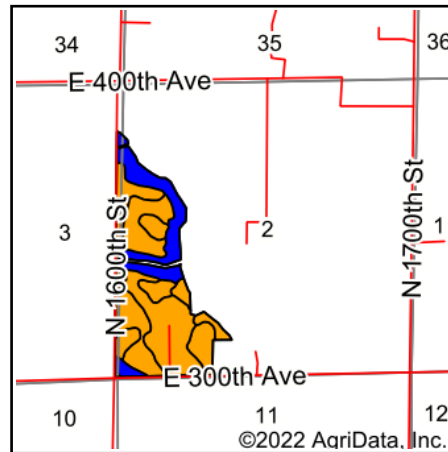


© AgriData, Inc. 2021 www.AgriDataInc.com  
Field borders provided by Farm Service Agency as of 5/21/2008.

# Soils Map



Soils data provided by USDA and NRCS.



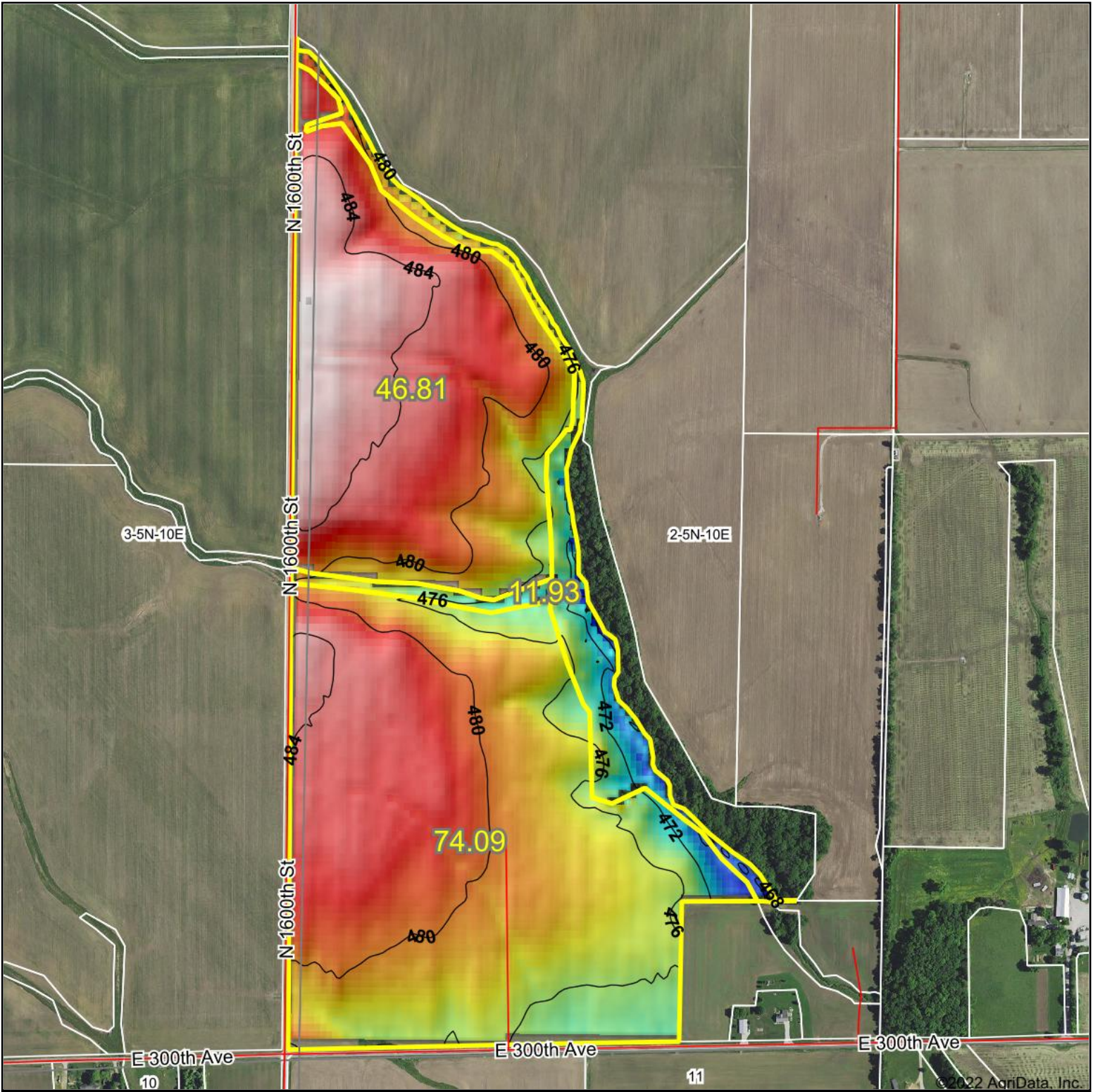
State: **Illinois**  
 County: **Jasper**  
 Location: **2-5N-10E**  
 Township: **Fox**  
 Acres: **120.9**  
 Date: **9/28/2022**



Area Symbol: IL079, Soil Area Version: 18							
Code	Soil Description	Acres	Percent of field	Il. State Productivity Index Legend	Corn Bu/A	Soybeans Bu/A	Crop productivity index for optimum management
912A	Hoyleton-Darmstadt silt loams, 0 to 2 percent slopes	46.07	38.1%		134	45	103
2A	Cisne silt loam, 0 to 2 percent slopes	42.59	35.2%		149	46	109
**620B2	Darmstadt silt loam, 2 to 5 percent slopes, eroded	27.08	22.4%		**110	**40	**86
**3B2	Hoyleton silt loam, 2 to 5 percent slopes, eroded	5.16	4.3%		**139	**44	**103
<b>Weighted Average</b>					<b>134.1</b>	<b>44.2</b>	<b>101.3</b>

**Table: Optimum Crop Productivity Ratings for Illinois Soil by K.R. Olson and J.M. Lang, Office of Research, ACES, University of Illinois at Champaign-Urbana.** Version: 1/2/2012 Amended Table S2 B811  
 Crop yields and productivity indices for optimum management (B811) are maintained at the following NRES web site: <http://soilproductivity.nres.illinois.edu/>  
 \*\* Indexes adjusted for slope and erosion according to Bulletin 811 Table S3  
 Soils data provided by USDA and NRCS. Soils data provided by University of Illinois at Champaign-Urbana.

# Topography Hillshade



<p>Low Elevation High</p>	<p>Source: USGS 10 meter dem              Interval(ft): 4              Min: 468.2              Max: 486.5              Range: 18.3              Average: 480.0              Standard Deviation: 3.44 ft</p>	<p>0ft 703ft 1407ft</p> <p>9/28/2022</p> <p><b>2-5N-10E</b>  <b>Jasper County</b>  <b>Illinois</b></p> <p>map center: 38° 54' 3.18, -88° 4' 16.31</p>
---------------------------	---	---

**CAPS** CAPITAL AGRICULTURAL PROPERTY SERVICES  
 Maps Provided By:  
**surety** CUSTOMIZED ONLINE MAPPING  
 © AgriData, Inc. 2021 www.AgriDataInc.com

Field borders provided by Farm Service Agency as of 5/21/2008.