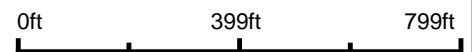


TRACT 1
Aerial Map



©2022 AgriData, Inc.

Map Center: 41° 23' 27.93, -89° 41' 32.49



9-16N-7E
Bureau County
Illinois



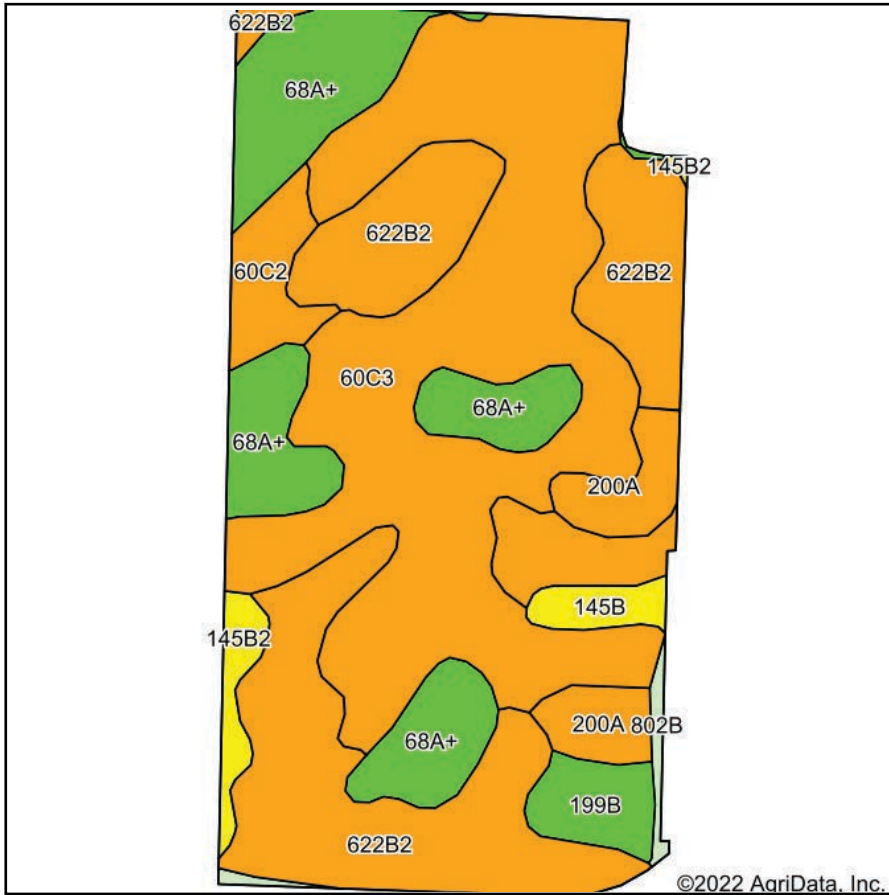
3/9/2022



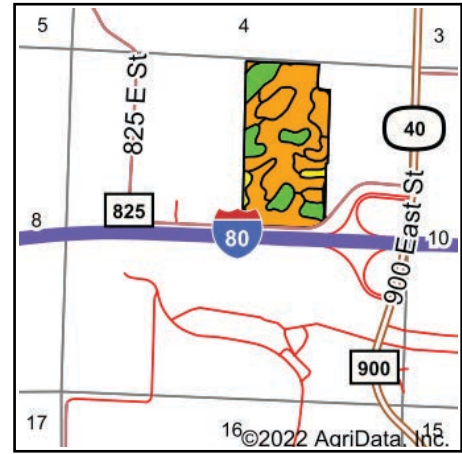
© AgriData, Inc. 2021 www.AgriDataInc.com

Field borders provided by Farm Service Agency as of 5/21/2008.

TRACT 1 Soils Map



Soils data provided by USDA and NRCS.



State: **Illinois**
 County: **Bureau**
 Location: **9-16N-7E**
 Township: **Concord**
 Acres: **72.55**
 Date: **3/9/2022**



Maps Provided By:



© AgriData, Inc. 2021

www.AgriDataInc.com



Area Symbol: IL011, Soil Area Version: 19

Code	Soil Description	Acres	Percent of field	Il. State Productivity Index Legend	Corn Bu/A	Soybeans Bu/A	Crop productivity index for optimum management
**60C3	La Rose clay loam, 5 to 10 percent slopes, severely eroded	28.52	39.3%		**137	**45	**101
**622B2	Wyanet silt loam, 2 to 5 percent slopes, eroded	22.05	30.4%		**153	**50	**114
68A+	Sable silt loam, 0 to 2 percent slopes, overwash	11.57	15.9%		192	63	143
200A	Orio loam, 0 to 2 percent slopes	3.25	4.5%		147	48	110
**60C2	La Rose silt loam, 5 to 10 percent slopes, eroded	2.22	3.1%		**148	**48	**110
**199B	Plano silt loam, 2 to 5 percent slopes	1.94	2.7%		**192	**59	**141
**145B2	Saybrook silt loam, 2 to 5 percent slopes, eroded	1.27	1.8%		**170	**54	**125
**145B	Saybrook silt loam, 2 to 5 percent slopes	1.09	1.5%		**177	**56	**131
802B	Orthents, loamy, undulating	0.58	0.8%				
152A	Drummer silty clay loam, 0 to 2 percent slopes	0.06	0.1%		195	63	144
Weighted Average					153	50	113.5

Table: Optimum Crop Productivity Ratings for Illinois Soil by K.R. Olson and J.M. Lang, Office of Research, ACES, University of Illinois at Champaign-Urbana. Version: 1/2/2012 Amended Table S2 B811

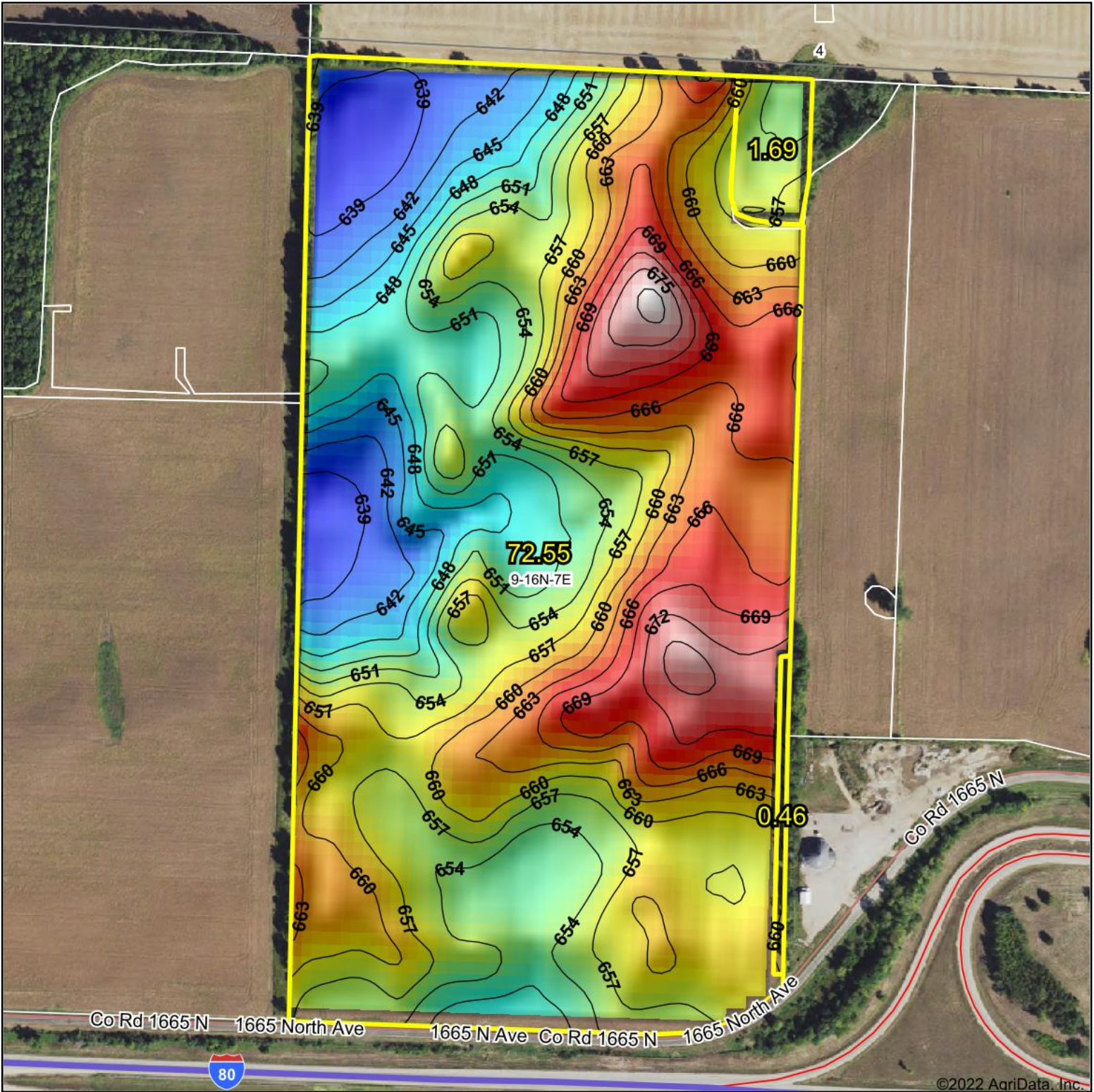
Crop yields and productivity indices for optimum management (B811) are maintained at the following NRES web site: <http://soilproductivity.nres.illinois.edu/>

** Indexes adjusted for slope and erosion according to Bulletin 811 Table S3

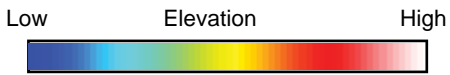
Soils data provided by USDA and NRCS. Soils data provided by University of Illinois at Champaign-Urbana.

TRACT 1

Topography Hillshade



©2022 AgriData, Inc.



Source: USGS 10 meter dem



Interval(ft): 3

Min: 0.0

Max: 0.0

Range: .0

Average: .0

Standard Deviation: 0 ft



3/9/2022

9-16N-7E
Bureau County
Illinois

map center: 41° 23' 27.93, -89° 41' 32.49

CAPS CAPITAL AGRICULTURAL PROPERTY SERVICES
 Maps Provided By:
surety CUSTOMIZED ONLINE MAPPING
 © AgriData, Inc. 2021 www.AgriDataInc.com

Field borders provided by Farm Service Agency as of 5/21/2008.