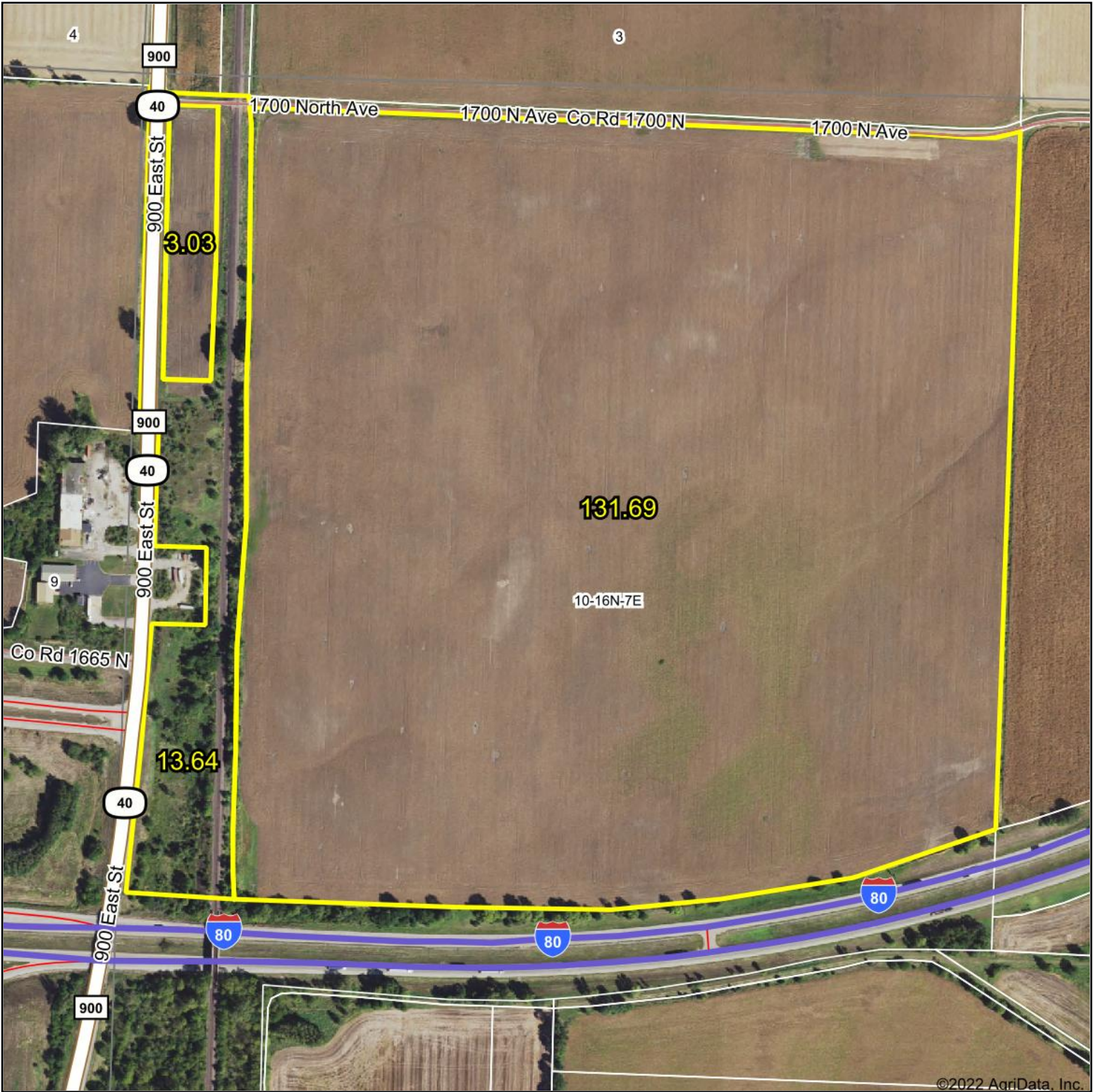


TRACT 3 Aerial Map



Map Center: 41° 23' 26.11, -89° 40' 49.93



10-16N-7E
Bureau County
Illinois

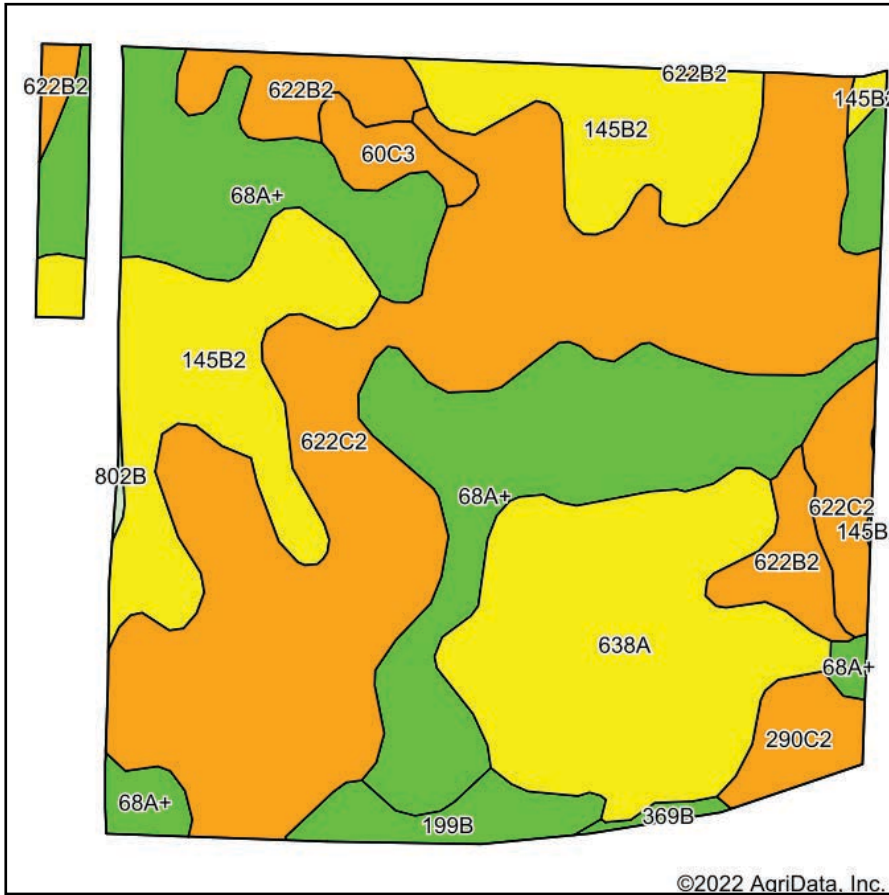


3/8/2022

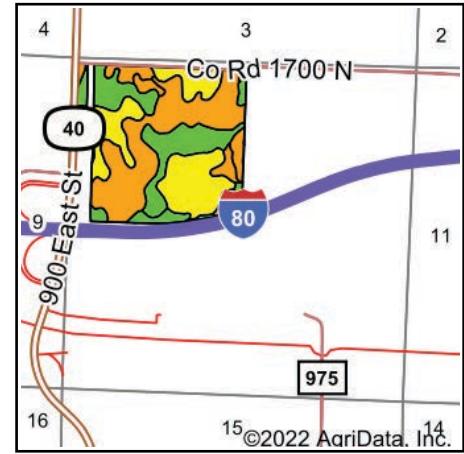
Maps Provided By:
surety
CUSTOMIZED ONLINE MAPPING
© AgriData, Inc. 2021 www.AgriDataInc.com

Field borders provided by Farm Service Agency as of 5/21/2008.

TRACT 3 Soils Map



Soils data provided by USDA and NRCS.



State: **Illinois**
 County: **Bureau**
 Location: **10-16N-7E**
 Township: **Concord**
 Acres: **134.72**
 Date: **3/8/2022**



Area Symbol: IL011, Soil Area Version: 19

Code	Soil Description	Acres	Percent of field	Il. State Productivity Index Legend	Corn Bu/A	Soybeans Bu/A	Crop productivity index for optimum management
**622C2	Wyanet silt loam, 5 to 10 percent slopes, eroded	47.14	35.0%		**150	**49	**112
68A+	Sable silt loam, 0 to 2 percent slopes, overwash	31.38	23.3%		192	63	143
**145B2	Saybrook silt loam, 2 to 5 percent slopes, eroded	21.14	15.7%		**170	**54	**125
638A	Muskego muck, 0 to 2 percent slopes	20.15	15.0%		169	54	125
**622B2	Wyanet silt loam, 2 to 5 percent slopes, eroded	6.64	4.9%		**153	**50	**114
**199B	Plano silt loam, 2 to 5 percent slopes	3.10	2.3%		**192	**59	**141
**290C2	Warsaw silt loam, 5 to 10 percent slopes, eroded	2.68	2.0%		**150	**48	**111
**60C3	La Rose clay loam, 5 to 10 percent slopes, severely eroded	1.89	1.4%		**137	**45	**101
**369B	Waupecan silt loam, 2 to 5 percent slopes	0.44	0.3%		**187	**58	**138
802B	Orthents, loamy, undulating	0.16	0.1%				
Weighted Average					166.6	54	123.7

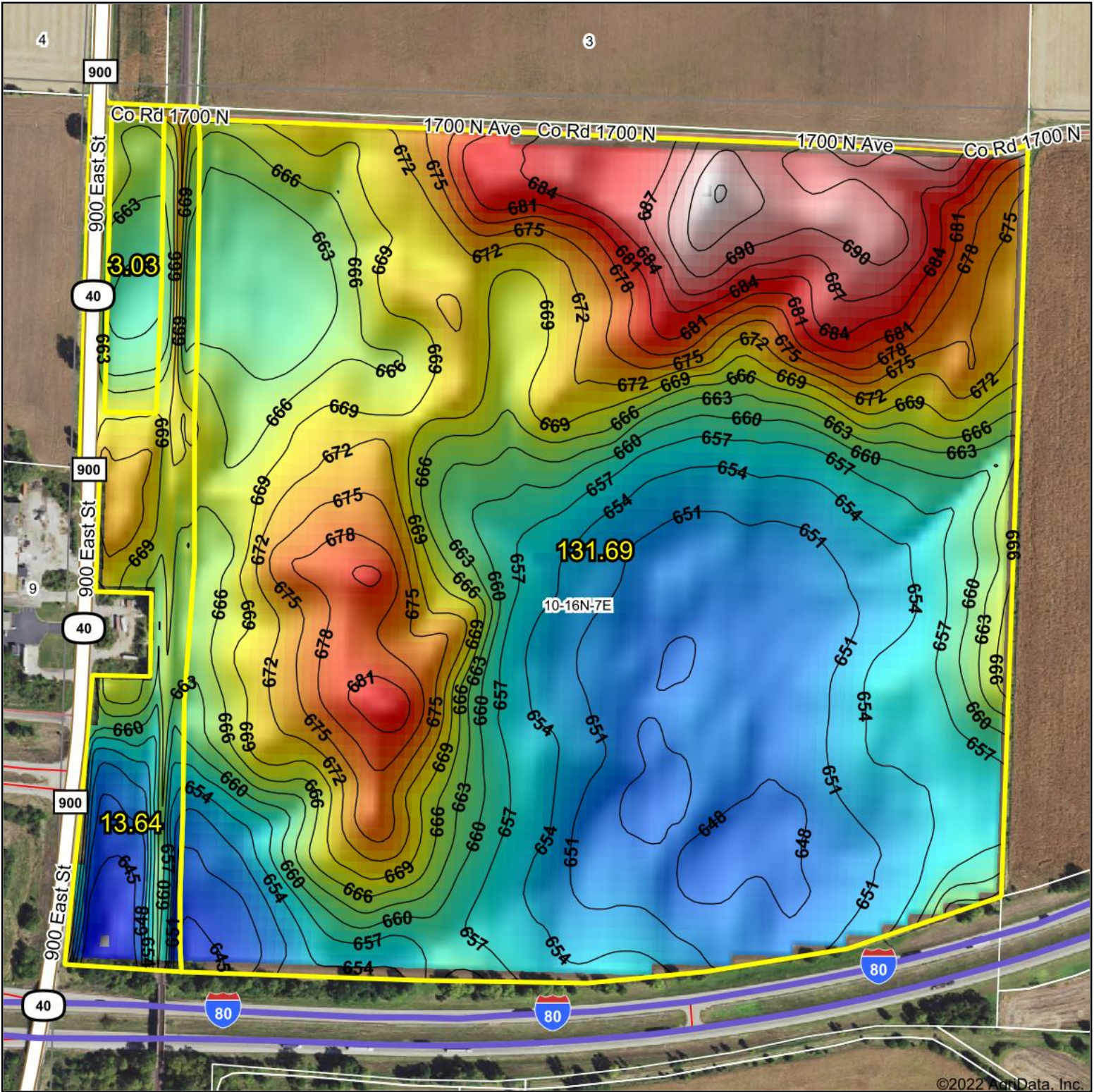
Table: Optimum Crop Productivity Ratings for Illinois Soil by K.R. Olson and J.M. Lang, Office of Research, ACES, University of Illinois at Champaign-Urbana. Version: 1/2/2012 Amended Table S2 B811

Crop yields and productivity indices for optimum management (B811) are maintained at the following NRES web site: <http://soilproductivity.nres.illinois.edu/>

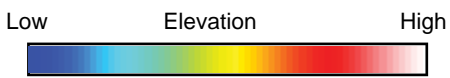
** Indexes adjusted for slope and erosion according to Bulletin 811 Table S3

Soils data provided by USDA and NRCS. Soils data provided by University of Illinois at Champaign-Urbana.

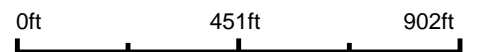
TRACT 3 Topography Hillshade



©2022 AgriData, Inc.



Source: USGS 10 meter dem



Interval(ft): 3

Min: 642.3

Max: 696.3

Range: 54.0

Average: 663.9

Standard Deviation: 11.84 ft



3/8/2022

10-16N-7E
Bureau County
Illinois

map center: 41° 23' 26.11, -89° 40' 49.93



Maps Provided By:



© AgriData, Inc. 2021 www.AgriDataInc.com

Field borders provided by Farm Service Agency as of 5/21/2008.