

TRACT 4 Aerial Map



©2022 AgriData, Inc.

Map Center: 41° 23' 52.17, -89° 40' 49.05



3-16N-7E
Bureau County
Illinois

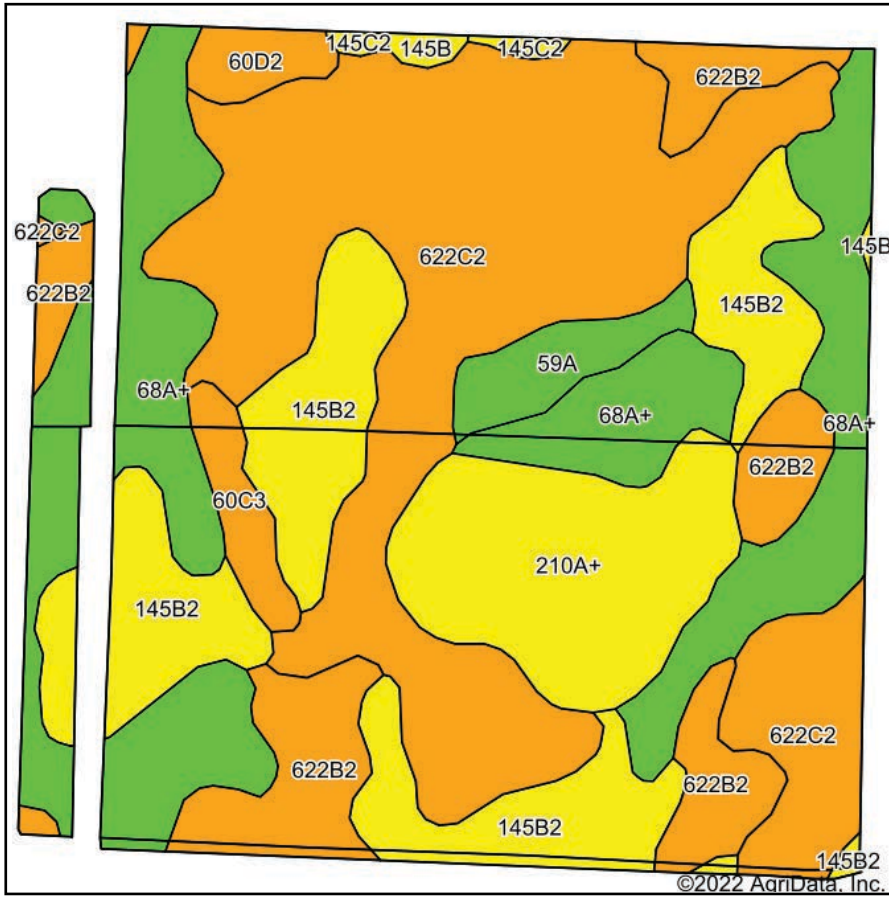


10/19/2022

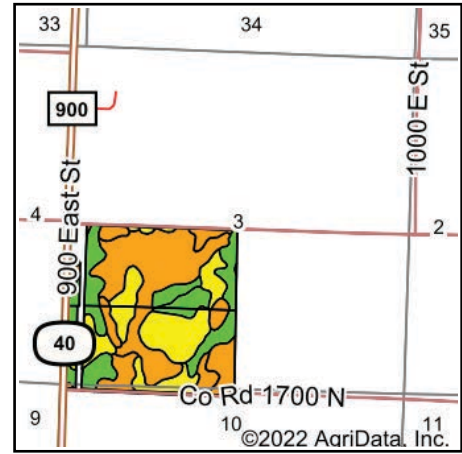
Maps Provided By:
 surety
CUSTOMIZED ONLINE MAPPING
© AgriData, Inc. 2021 www.AgriDataInc.com

Field borders provided by Farm Service Agency as of 5/21/2008.

TRACT 4 Soils Map



Soils data provided by USDA and NRCS.



State: **Illinois**
 County: **Bureau**
 Location: **3-16N-7E**
 Township: **Concord**
 Acres: **151.9**
 Date: **10/19/2022**



Area Symbol: IL011, Soil Area Version: 19

Code	Soil Description	Acres	Percent of field	Il. State Productivity Index Legend	Corn Bu/A	Soybeans Bu/A	Crop productivity index for optimum management
**622C2	Wyanet silt loam, 5 to 10 percent slopes, eroded	51.42	33.9%		**150	**49	**112
68A+	Sable silt loam, 0 to 2 percent slopes, overwash	34.33	22.6%		192	63	143
**145B2	Saybrook silt loam, 2 to 5 percent slopes, eroded	26.12	17.2%		**170	**54	**125
**622B2	Wyanet silt loam, 2 to 5 percent slopes, eroded	15.40	10.1%		**153	**50	**114
210A+	Lena silt loam, depressional, 0 to 2 percent slopes, overwash	15.18	10.0%		170	55	126
59A	Lisbon silt loam, 0 to 2 percent slopes	3.43	2.3%		188	59	136
**60C3	La Rose clay loam, 5 to 10 percent slopes, severely eroded	2.64	1.7%		**137	**45	**101
**60D2	La Rose silt loam, 10 to 18 percent slopes, eroded	2.18	1.4%		**142	**46	**105
**145C2	Saybrook silt loam, 5 to 10 percent slopes, eroded	0.62	0.4%		**166	**53	**123
**145B	Saybrook silt loam, 2 to 5 percent slopes	0.58	0.4%		**177	**56	**131
Weighted Average					165.9	53.9	123.2

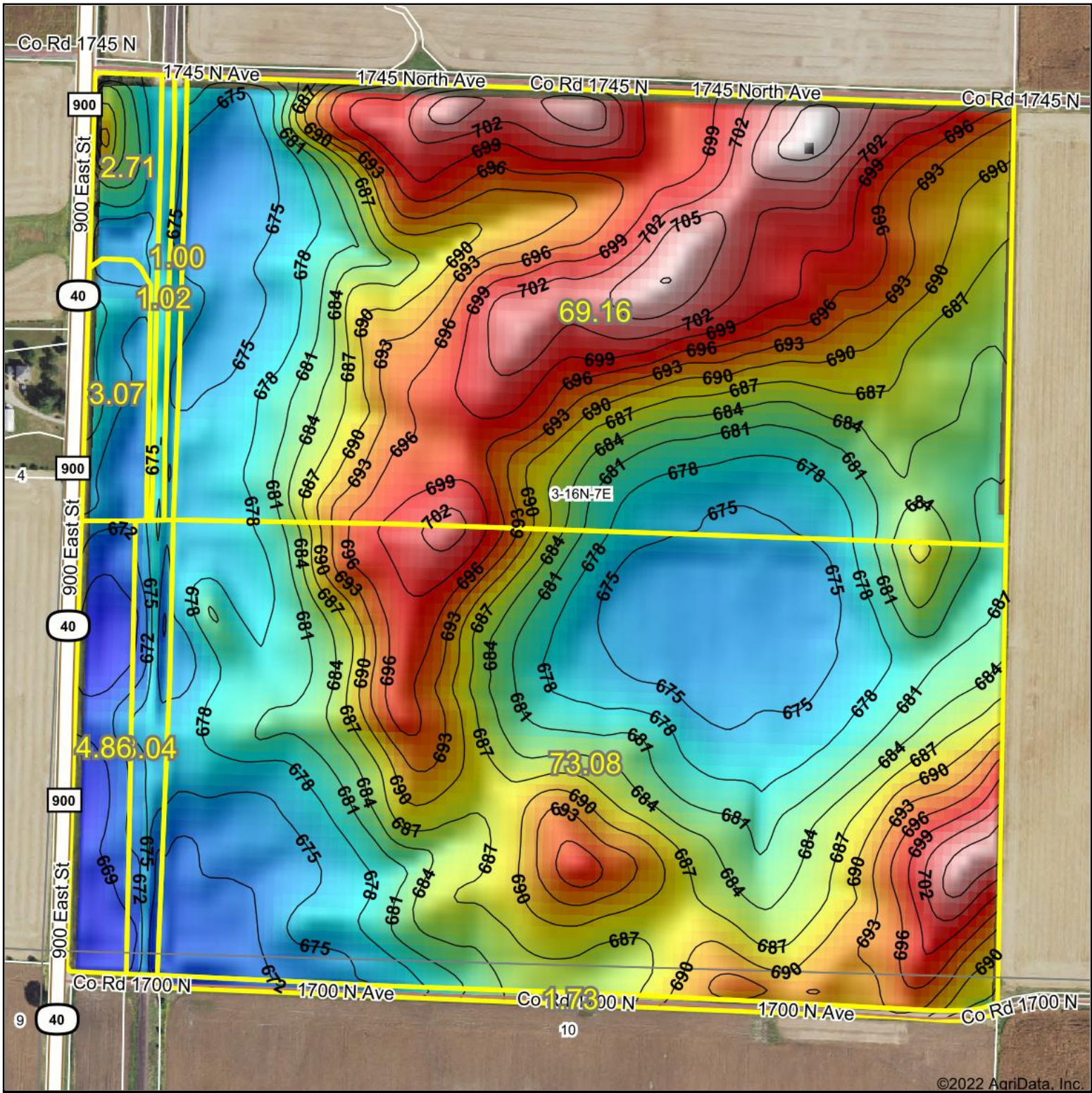
Table: Optimum Crop Productivity Ratings for Illinois Soil by K.R. Olson and J.M. Lang, Office of Research, ACES, University of Illinois at Champaign-Urbana. Version: 1/2/2012 Amended Table S2 B811

Crop yields and productivity indices for optimum management (B811) are maintained at the following NRES web site: <http://soilproductivity.nres.illinois.edu/>

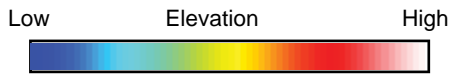
** Indexes adjusted for slope and erosion according to Bulletin 811 Table S3

Soils data provided by USDA and NRCS. Soils data provided by University of Illinois at Champaign-Urbana.

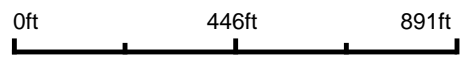
TRACT 4 Topography Hillshade



©2022 AgriData, Inc.



Source: USGS 10 meter dem
 Interval(ft): 3
 Min: 667.1
 Max: 709.6
 Range: 42.5
 Average: 685.6
 Standard Deviation: 9.97 ft



CAPS CAPITAL AGRICULTURAL PROPERTY SERVICES
 Maps Provided By:
surety
 CUSTOMIZED ONLINE MAPPING
 © AgriData, Inc. 2021 www.AgriDataInc.com



3-16N-7E
Bureau County
Illinois

map center: 41° 23' 52.17, -89° 40' 49.05

Field borders provided by Farm Service Agency as of 5/21/2008.