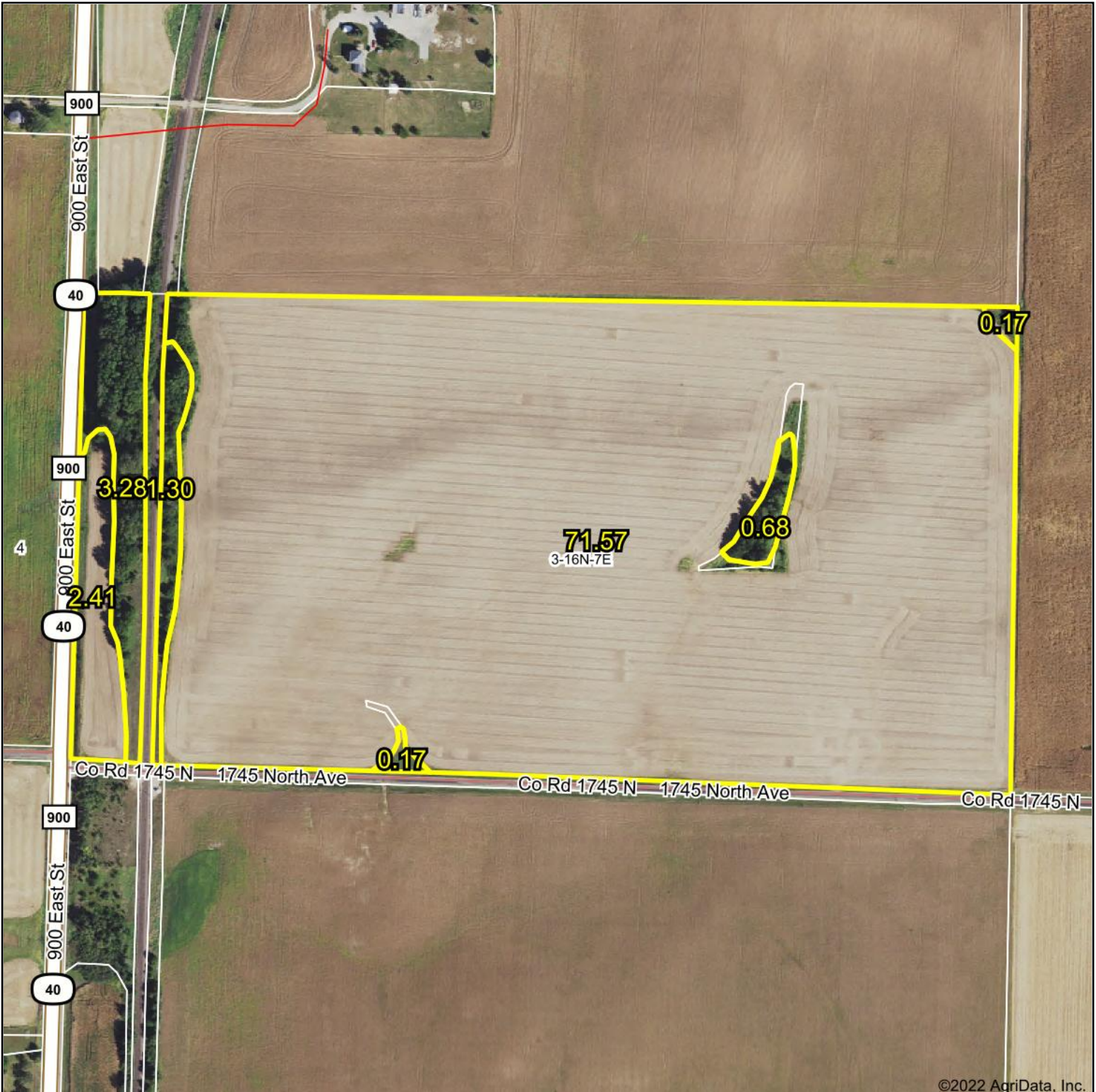
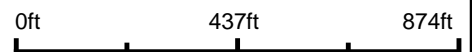


TRACT 9 Aerial Map



©2022 AgriData, Inc.

Map Center: 41° 24' 11.9, -89° 40' 48.79



3-16N-7E
Bureau County
Illinois



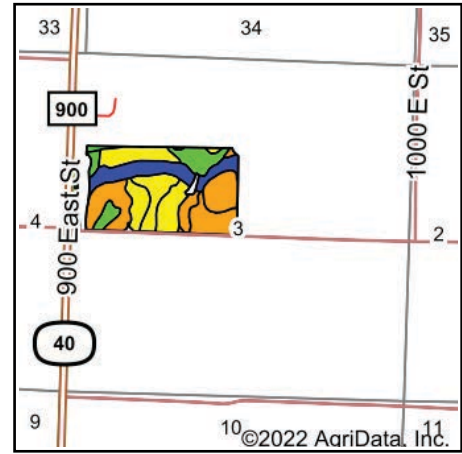
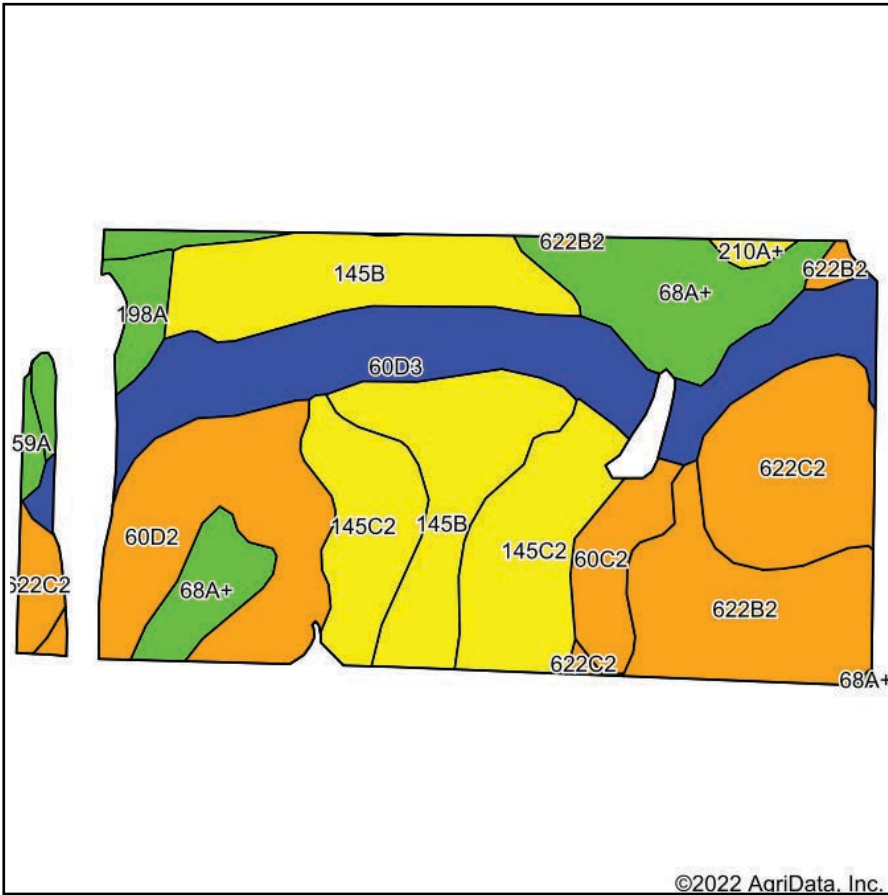
3/9/2022



© AgriData, Inc. 2021 www.AgriDataInc.com

Field borders provided by Farm Service Agency as of 5/21/2008.

TRACT 9 Soils Map



State: **Illinois**
 County: **Bureau**
 Location: **3-16N-7E**
 Township: **Concord**
 Acres: **73.98**
 Date: **3/9/2022**



Soils data provided by USDA and NRCS.

Area Symbol: IL011, Soil Area Version: 19							
Code	Soil Description	Acres	Percent of field	Il. State Productivity Index Legend	Corn Bu/A	Soybeans Bu/A	Crop productivity index for optimum management
**145B	Saybrook silt loam, 2 to 5 percent slopes	13.22	17.9%		**177	**56	**131
**60D3	La Rose clay loam, 10 to 18 percent slopes, severely eroded	12.36	16.7%		**129	**42	**96
**145C2	Saybrook silt loam, 5 to 10 percent slopes, eroded	10.36	14.0%		**166	**53	**123
**60D2	La Rose silt loam, 10 to 18 percent slopes, eroded	8.89	12.0%		**142	**46	**105
68A+	Sable silt loam, 0 to 2 percent slopes, overwash	8.37	11.3%		192	63	143
**622C2	Wyanet silt loam, 5 to 10 percent slopes, eroded	7.97	10.8%		**150	**49	**112
**622B2	Wyanet silt loam, 2 to 5 percent slopes, eroded	7.69	10.4%		**153	**50	**114
**60C2	La Rose silt loam, 5 to 10 percent slopes, eroded	2.65	3.6%		**148	**48	**110
198A	Elburn silt loam, 0 to 2 percent slopes	1.69	2.3%		197	61	143
59A	Lisbon silt loam, 0 to 2 percent slopes	0.42	0.6%		188	59	136
210A+	Lena silt loam, depressional, 0 to 2 percent slopes, overwash	0.36	0.5%		170	55	126
Weighted Average					159	51.3	118

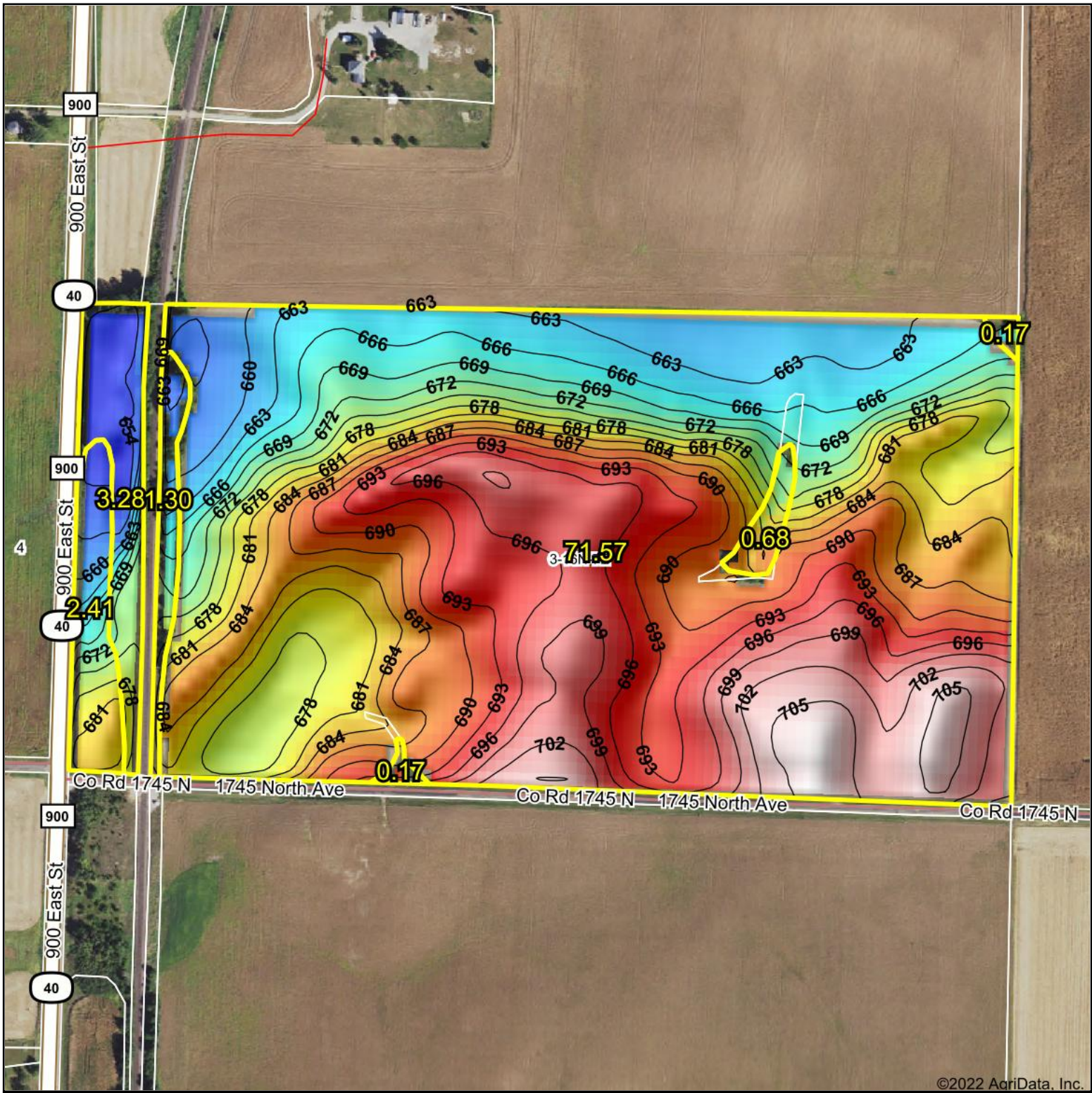
Table: Optimum Crop Productivity Ratings for Illinois Soil by K.R. Olson and J.M. Lang, Office of Research, ACES, University of Illinois at Champaign-Urbana. Version: 1/2/2012 Amended Table S2 B811

Crop yields and productivity indices for optimum management (B811) are maintained at the following NRES web site: <http://soilproductivity.nres.illinois.edu/>

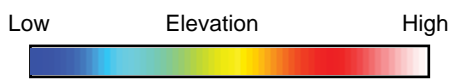
** Indexes adjusted for slope and erosion according to Bulletin 811 Table S3

Soils data provided by USDA and NRCS. Soils data provided by University of Illinois at Champaign-Urbana.

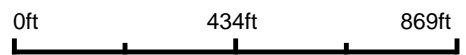
TRACT 9 Topography Hillshade



©2022 AgriData, Inc.



Source: USGS 10 meter dem
 Interval(ft): 3
 Min: 652.1
 Max: 707.6
 Range: 55.5
 Average: 683.0
 Standard Deviation: 13.91 ft



3-16N-7E
Bureau County
Illinois

map center: 41° 24' 11.9, -89° 40' 48.79


CAPITAL AGRICULTURAL PROPERTY SERVICES
 Maps Provided By:

surety
 CUSTOMIZED ONLINE MAPPING
 © AgriData, Inc. 2021 www.AgriDataInc.com

Field borders provided by Farm Service Agency as of 5/21/2008.