

# 2012 FREIGHTLINER CASCADIA 125

Year	VIN	Stock Number
2012	1FUJGLBG2LBC858420820	6/12
Horsepower	Drive	Mileage
450	6x4	394277
Engine Type	Suspension	Tires
ISX15	Air Ride	295/75R22.5



### Location

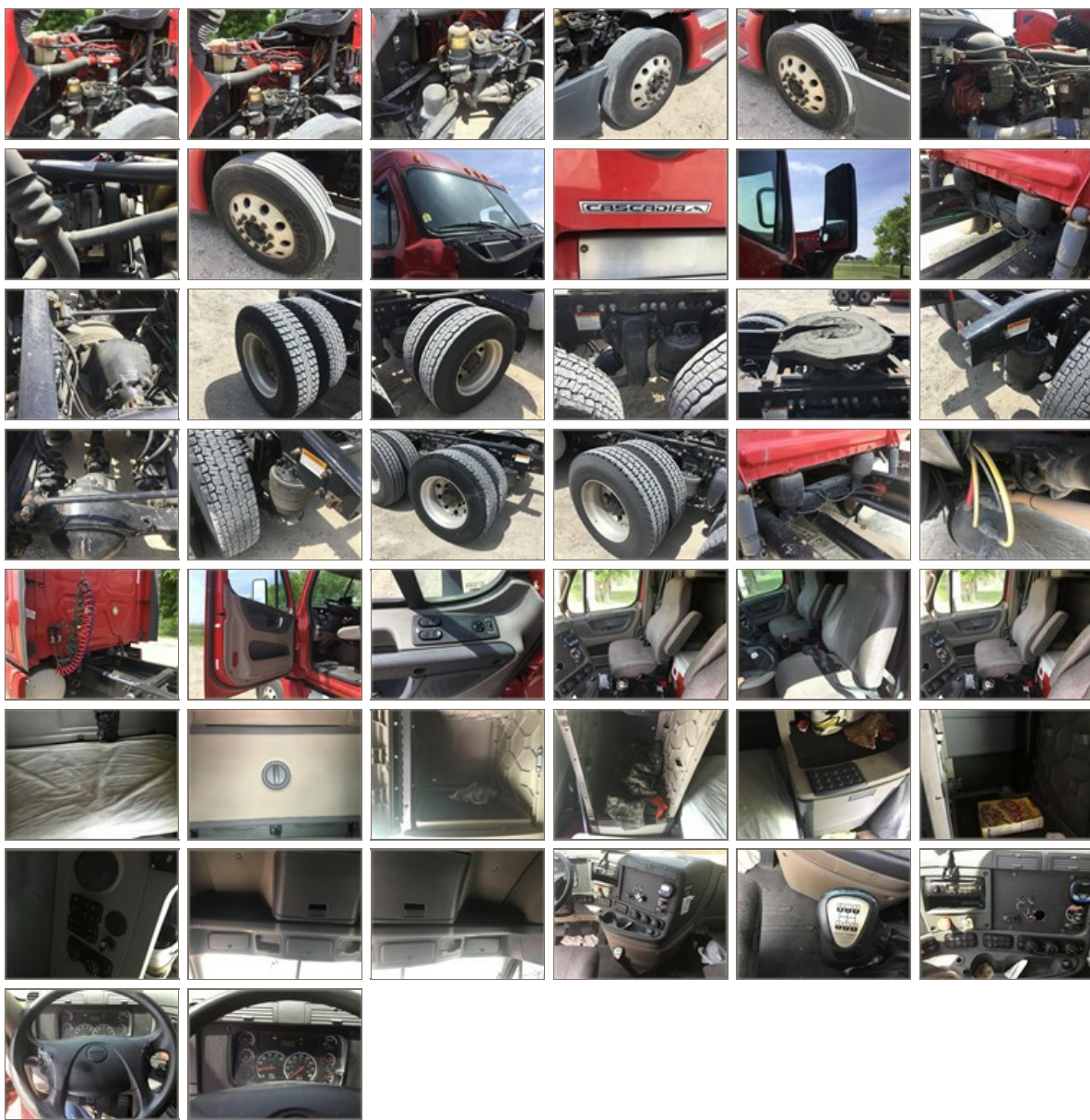
Wills Point, TX  
24280 I-20 Frontage Rd  
Wills Point, Texas USA 75169

### Inspection Comments

Sliding 5th Wheel, Overhead Storage, DEF



Category Specifics	
Auxiliary Power Unit (APU)	No
Cabinets	Yes
Double Bunks	No
Microwave	No
Refrigerator	No
TV Prep	Yes
Sleeper Door	No
Sleeper Windows	Yes
Sleeper	Raised Roof Sleeper
Sleeper Size	60"
Number of Beds	2



**General Appearance**

Color	Red
Cab Extenders	Yes
Air Shield / Fairing	No
Air Horns	Yes
Chrome Mirrors	No
Daylight Doors	No
Rear Window	No
Visor	Yes
Chrome Exhaust	No
Exhaust	Single
Air Cleaners	Other
Power Mirrors	Both
Bumper	Other
Hood	Excellent
Grill	Excellent
Driver Quarter Panel	Excellent
Passenger Quarter Panel	Excellent
Driver Quarter Fender	Excellent
Passenger Quarter Fender	Excellent
Fuel Tank Type	Aluminum
Tank Fairing	No
Driver Side Fuel Tank	Yes
Passenger Side Fuel Tank	Yes
Overall Glass Condition	Excellent
Physical Damages	None

**General Appearance Interior**

Interior	Excellent	
A/C Condition	Fair	Does Not Blow Cold
Heater	Good	
Air Ride Seats	Dual	
High Back Seats	Dual	
Gauges	Standard	
Steering	Power	
Radio	Yes	
Tilt/Telescopic Wheel	Yes	
Woodgrain Dash	No	
Digital Display	Yes	
Wrap Around Dash	Yes	
Sunroof	No	
Other Interior Options	Power Windows, Overhead Storage	
A/C	Yes	

**Engine**

Electronic Engine Control	Yes
Overdrive	No
Emission Control Label	Yes
Coolant Leaks	No
Air Leaks	Not Tested
Air Gauges	Yes
Diesel Particulate Filter (DPF)	Yes
Engine Brake	Yes
Belts	Good
Hoses	Good
Starter	Good
Fuel Type	Diesel
Torque	1550/1750
Blow-By	No

**Powertrain**

Transmission Manufacturer	Eaton Fuller
Transmission Condition	Good
Transmission	10 Spd
Clutch	Good
Front Differential	Good
Rear Differential	Good
Differential Lock	Yes
Ratio	336

**Chassis**

Gross Vehicle Weight	52000	
Wheelbase	226	
Frame	Steel	
Double Frame	No	
Rust	Yes	Minor
Emergency Brake Works	Yes	
Brake Type	Air	
Brake Lines	Good	
Tires	295/75R22.5	
Tire Type	Caps	
Suspension	Air Ride	
Wheels	Aluminum/Steel	
Front Axle	Set Back	
Front Axle Weight	12000	
Number of Rear Axles	Tandem	
Rear Axle Weight	40000	
Lift Axle	No	
Wet Kit	No	

**Electrical**

Batteries	Good
Headlights	Good
Tail Lights	Good
Interior Lights	Good
Fog Lights	No
Bullet Lights	Yes
Cab Accent Lights	No
Spotlight	No
Inverter	No