



2012 KENWORTH T660

| Year | VIN | Stock Number |
|-------------|-------------------|--------------|
| 2012 | XXKADP9X9CJ332961 | 20822 6/12 |
| Horsepower | Drive | Mileage |
| 455 | 6x4 | 405477 |
| Engine Type | Suspension | Tires |
| MX13 | Air Ride | 295/75 R22.5 |

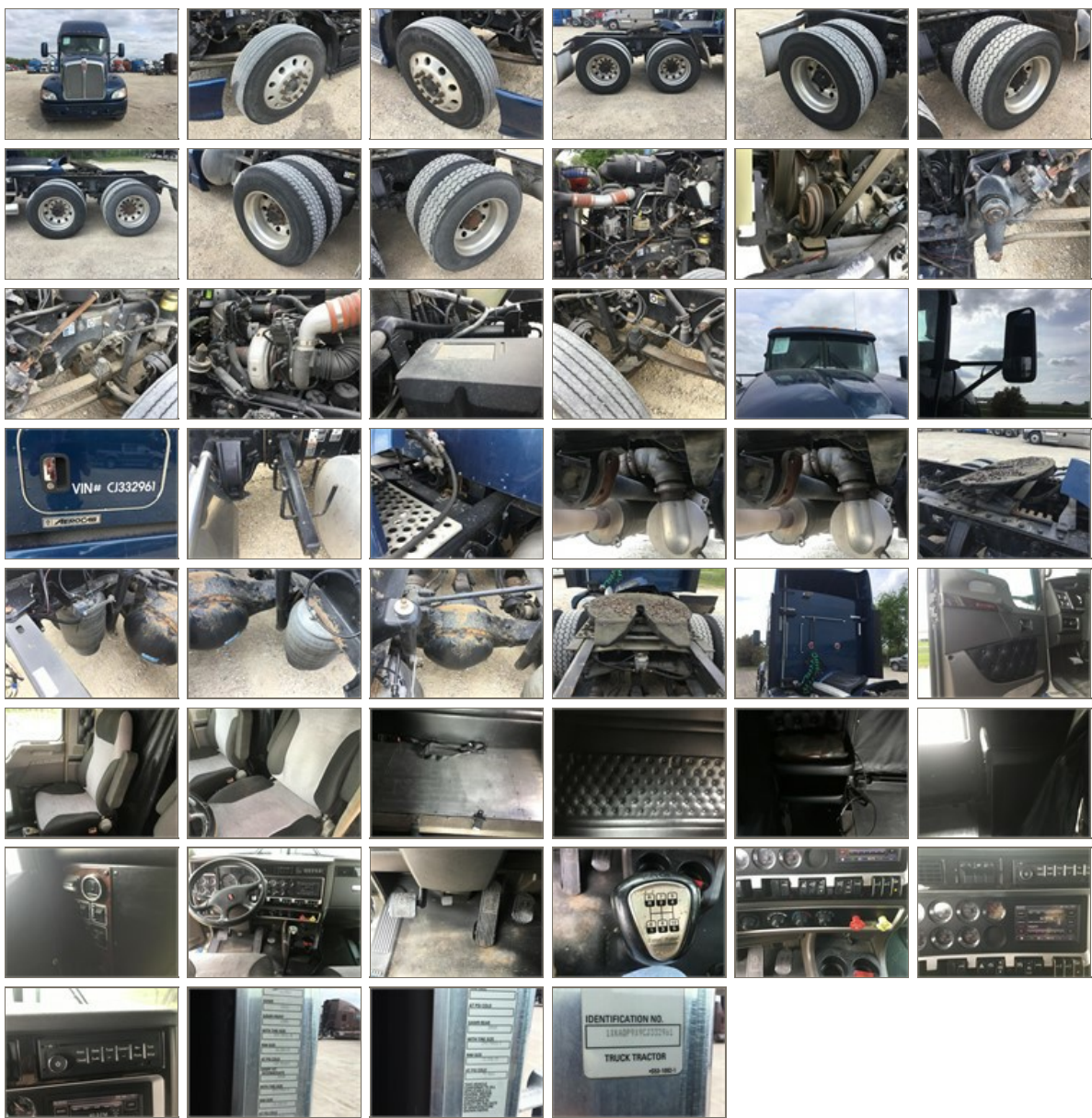


Location

Wills Point, TX
24280 I-20 Frontage Rd
Wills Point, Texas USA 75169



| Category Specifics | |
|----------------------------|------------------|
| Auxiliary Power Unit (APU) | No |
| Cabinets | Yes |
| Double Bunks | No |
| Microwave | No |
| Refrigerator | No |
| TV Prep | Yes |
| Sleeper Door | Yes |
| Sleeper Windows | Yes |
| Sleeper | Mid Roof Sleeper |
| Sleeper Size | 50 |
| Number of Beds | 1 |



| General Appearance | | |
|--------------------------|------------------------|---------|
| Color | Blue | |
| Cab Extenders | Yes | |
| Air Shield / Fairing | Yes | |
| Air Horns | Yes | |
| Chrome Mirrors | No | |
| Daylight Doors | Yes | |
| Rear Window | No | |
| Visor | Yes | |
| Chrome Exhaust | No | |
| Exhaust | Single | |
| Air Cleaners | Other | |
| Bumper | Aerodynamic | |
| Hood | Good | |
| Grill | Good | |
| Driver Quarter Panel | Good | |
| Passenger Quarter Panel | Good | |
| Fuel Tank Type | Aluminum | |
| Tank Fairing | Yes | |
| Driver Side Fuel Tank | Yes | 100 gal |
| Passenger Side Fuel Tank | Yes | 100 gal |
| Overall Glass Condition | Good | |
| Physical Damages | Some Minor Paint Chips | |

| General Appearance Interior | | |
|-----------------------------|----------|-----------|
| Interior | Good | |
| A/C Condition | Fair | |
| Heater | Good | |
| Air Ride Seats | Dual | |
| High Back Seats | Dual | |
| Gauges | Standard | |
| Steering | Power | |
| Radio | Yes | |
| Tilt/Telescopic Wheel | Yes | Tilt only |
| Woodgrain Dash | Yes | |
| Digital Display | Yes | |
| Wrap Around Dash | Yes | |
| Sunroof | No | |
| A/C | Yes | |

| Engine | |
|---------------------------------|------------|
| Electronic Engine Control | Yes |
| Emission Control Label | Yes |
| Oil Leaks | No |
| Coolant Leaks | No |
| Air Gauges | Yes |
| Diesel Particulate Filter (DPF) | Yes |
| Engine Brake | Yes |
| Belts | Good |
| Hoses | Good |
| Fuel Type | Diesel |
| Blow-By | None Noted |

| Powertrain | |
|---------------------------|--------------|
| Transmission Manufacturer | Eaton Fuller |
| Transmission Condition | Good |
| Transmission | 10 Spd |
| Clutch | Good |
| Front Differential | Good |
| Rear Differential | Good |
| Differential Lock | Yes |

| Chassis | |
|------------------------|----------------|
| Gross Vehicle Weight | 53200 |
| Wheelbase | 216 |
| Frame | Steel |
| Double Frame | No |
| Rust | Yes |
| Emergency Brake Works | Yes |
| Brake Type | Air |
| Brake Lines | Good |
| Tires | 295/75 R22.5 |
| Suspension | Air Ride |
| Wheels | Aluminum/Steel |
| Front Axle | Set Back |
| Front Axle Weight | 13200 |
| Rear Axle Manufacturer | Spicer |
| Number of Rear Axles | Tandem |
| Rear Axle Weight | 40000 |
| Lift Axle | No |
| Wet Kit | No |

Electrical

| | |
|-------------------|------|
| Batteries | Good |
| Tail Lights | Good |
| Interior Lights | Good |
| Fog Lights | No |
| Bullet Lights | Yes |
| Cab Accent Lights | No |
| Spotlight | No |
| Inverter | Yes |