

# 2012 KENWORTH T700

| Year | VIN               | Stock Number |
|------|-------------------|--------------|
| 2012 | 1XKFDP9X2CJ314940 | 20824 6/12   |

| Drive | Mileage | Engine Type |
|-------|---------|-------------|
| 6x4   | 420163  | MX13        |

| Suspension | Tires       | Location  |
|------------|-------------|---|
| Air Ride   | 275/80R22.5 | Wills Point, TX<br>24280 I-20<br>Frontage Rd<br>Wills Point, Texas<br>USA 75169 |



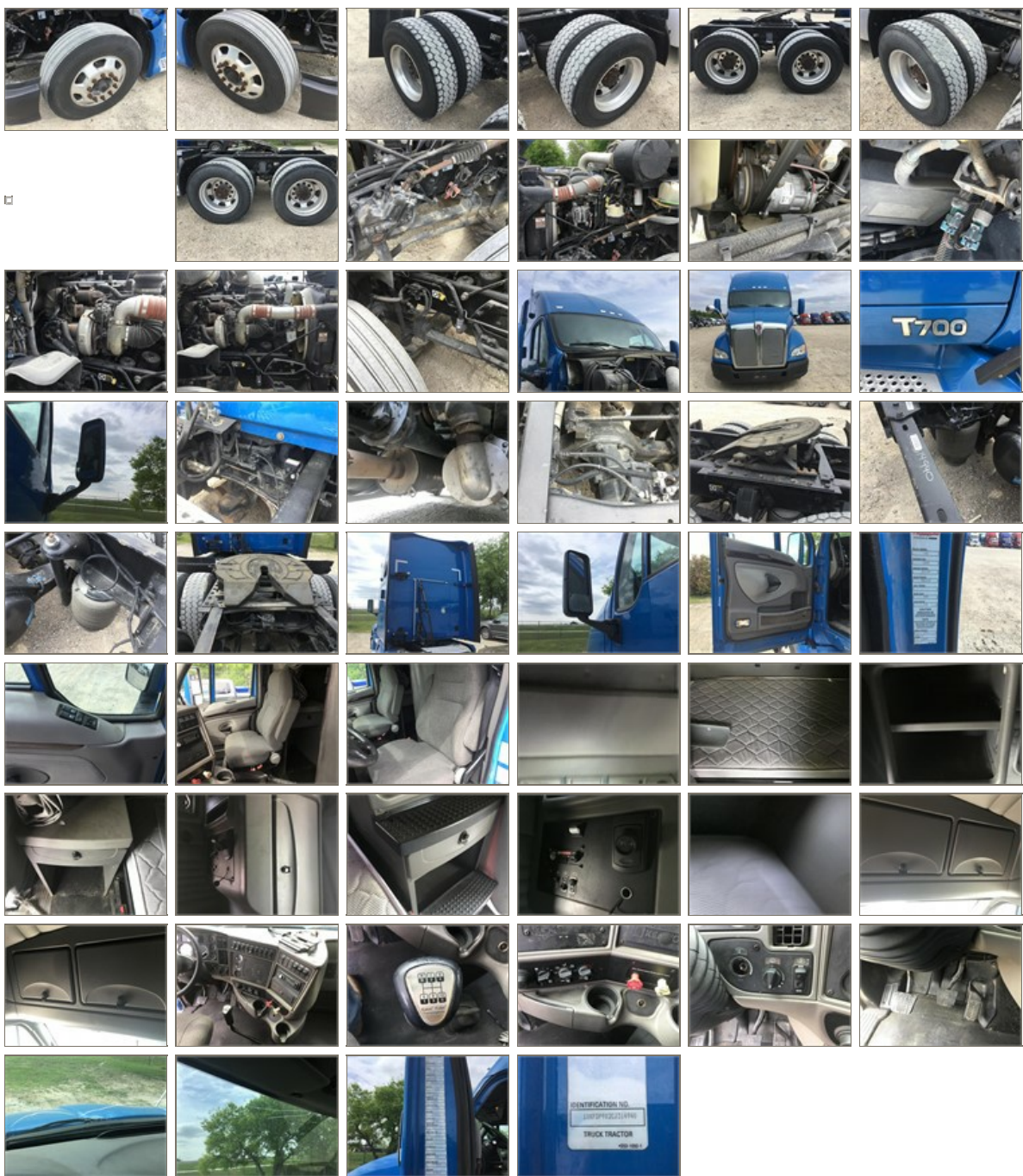
## Inspection Comments

DEF, Sliding 5th Wheel



## Category Specifics

|                            |                        |
|----------------------------|------------------------|
| Auxiliary Power Unit (APU) | No                     |
| Cabinets                   | Yes                    |
| Double Bunks               | Yes                    |
| Microwave                  | No                     |
| Refrigerator               | No                     |
| TV Prep                    | No                     |
| Sleeper Door               | No                     |
| Sleeper Windows            | Yes                    |
| Sleeper                    | Raised Roof<br>Sleeper |
| Sleeper Size               | 60                     |
| Number of Beds             | 1                      |



| General Appearance       |           |            |
|--------------------------|-----------|------------|
| Color                    | Blue      |            |
| Cab Extenders            | Yes       |            |
| Air Shield / Fairing     | No        |            |
| Air Horns                | Yes       |            |
| Chrome Mirrors           | No        |            |
| Daylight Doors           | No        |            |
| Rear Window              | No        |            |
| Visor                    | Yes       |            |
| Chrome Exhaust           | No        |            |
| Exhaust                  | Single    |            |
| Air Cleaners             | Other     |            |
| Power Mirrors            | Both      |            |
| Bumper                   | Other     |            |
| Hood                     | Excellent |            |
| Grill                    | Good      | Minor Dent |
| Driver Quarter Panel     | Excellent |            |
| Passenger Quarter Panel  | Excellent |            |
| Driver Quarter Fender    | Excellent |            |
| Passenger Quarter Fender | Excellent |            |
| Fuel Tank Type           | Aluminum  |            |
| Tank Fairing             | No        |            |
| Driver Side Fuel Tank    | Yes       |            |
| Passenger Side Fuel Tank | Yes       |            |
| Overall Glass Condition  | Excellent |            |
| Physical Damages         | None      |            |

| General Appearance Interior |                                 |  |
|-----------------------------|---------------------------------|--|
| Interior                    | Excellent                       |  |
| A/C Condition               | Good                            |  |
| Heater                      | Good                            |  |
| Air Ride Seats              | Dual                            |  |
| High Back Seats             | Dual                            |  |
| Gauges                      | Chrome                          |  |
| Steering                    | Power                           |  |
| Radio                       | Panasonic                       |  |
| Tilt/Telescopic Wheel       | Yes                             |  |
| Woodgrain Dash              | No                              |  |
| Digital Display             | Yes                             |  |
| Wrap Around Dash            | Yes                             |  |
| Sunroof                     | No                              |  |
| Other Interior Options      | Power Windows, Overhead Storage |  |
| A/C                         | Yes                             |  |

| Engine                          |            |  |
|---------------------------------|------------|--|
| Electronic Engine Control       | Yes        |  |
| Overdrive                       | No         |  |
| Emission Control Label          | Yes        |  |
| Oil Leaks                       | No         |  |
| Coolant Leaks                   | No         |  |
| Air Leaks                       | Not Tested |  |
| Air Gauges                      | Yes        |  |
| Diesel Particulate Filter (DPF) | Yes        |  |
| Engine Brake                    | Yes        |  |
| Belts                           | Fair       |  |
| Hoses                           | Good       |  |
| Starter                         | Good       |  |
| Fuel Type                       | Diesel     |  |
| Blow-By                         | No         |  |

| Powertrain                |              |  |
|---------------------------|--------------|--|
| Transmission Manufacturer | Eaton Fuller |  |
| Transmission Condition    | Good         |  |
| Transmission              | 10 Spd       |  |
| Clutch                    | Good         |  |
| Front Differential        | Good         |  |
| Rear Differential         | Good         |  |
| Differential Lock         | Yes          |  |

| Chassis               |                |       |
|-----------------------|----------------|-------|
| Gross Vehicle Weight  | 52000          |       |
| Wheelbase             | 229            |       |
| Double Frame          | No             |       |
| Rust                  | Yes            | Minor |
| Emergency Brake Works | Yes            |       |
| Brake Type            | Air            |       |
| Brake Lines           | Good           |       |
| Tires                 | 275/80R22.5    |       |
| Tire Type             | Caps           |       |
| Suspension            | Air Ride       |       |
| Wheels                | Aluminum/Steel |       |
| Front Axle            | Set Back       |       |
| Front Axle Weight     | 12000          |       |
| Number of Rear Axles  | Tandem         |       |
| Rear Axle Weight      | 40000          |       |
| Lift Axle             | No             |       |
| Wet Kit               | No             |       |

Electrical

Batteries Good

Headlights Good

Tail Lights Good

Interior Lights Excellent

Fog Lights No

Bullet Lights Yes

Cab Accent Lights No

Spotlight No

Inverter No